

# Airport Layout Plan for the Baraboo/Wisconsin Dells Regional Airport Baraboo, Wisconsin

Prepared for  
Baraboo Airport Commission

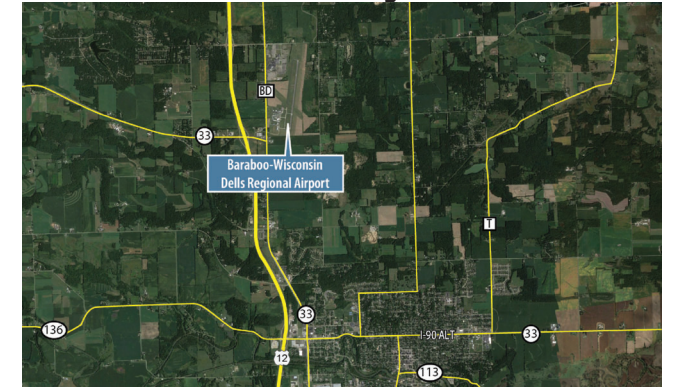
### Drawing Index:

1. Title Sheet
2. Airport Data Sheet
3. Airport Layout Plan Drawing
4. Airport Airspace Drawing
5. Approach Profile Drawing
6. Inner Portion of the Approach Surface Drawing - Runway 1
7. Inner Portion of the Approach Surface Drawing - Runway 19
8. Inner Portion of the Approach Surface Drawing Runway 14/32
9. Departure Surface Drawing - Runway 1/19
10. Terminal Area Drawing - I
11. Airport Land Use Drawing
12. Exhibit "A" Airport Property Inventory Map

**Location**



**Vicinity**



PDF Created: Date: 2/23/2024, Time: 10:36:20 AM, Source Document Path: C:\Users\corm\Documents\Coffman Associates\InoCoffman - sp\_GIS\DLL\_Baraboo\_2022\ALP\_Set\ESR\IMX\Da01\_DLL\_TitleSheet.mxd

DRAFT

<b>Baraboo/Wisconsin Dells Regional Airport</b>				
<b>Title Sheet</b>				
Baraboo, Wisconsin				
PLANNED BY: <i>Tyler Stuber</i>				
DETAILED BY: <i>Chris Donnelly</i>				
APPROVED BY: <i>Mike Dmyterko</i>				
March 2024				
				SHEET <b>1</b> OF <b>12</b>

THE PREPARATION OF THESE DOCUMENTS WAS FINANCED IN PART THROUGH A PLANNING GRANT FROM THE FEDERAL AVIATION ADMINISTRATION AS PROVIDED UNDER SECTION 506 OF THE AIRPORT AND AIRWAY IMPROVEMENT ACT OF 1982, AS AMENDED. THE CONTENTS DO NOT NECESSARILY REFLECT THE OFFICIAL VIEWS OR POLICY OF THE FAA. ACCEPTANCE OF THESE DOCUMENTS BY THE FAA DOES NOT IN ANY WAY CONSTITUTE A COMMITMENT OF THE PART OF THE UNITED STATES TO PARTICIPATE IN ANY DEVELOPMENT DESCRIBED HEREIN NOR DOES IT INDICATE THAT THE PROPOSED DEVELOPMENT IS ENVIRONMENTALLY ACCEPTABLE IN ACCORDANCE WITH THE APPROPRIATE PUBLIC LAWS.

RUNWAY DATA TABLE	RUNWAY 1/19				RUNWAY 14/32 (Utility)				
	EXISTING		ULTIMATE		EXISTING		ULTIMATE		
Runway Identification	1	19	1	19	14	32	14	32	
Runway Design Code (RDC)	B-II-5000		C-II-2400		A-I(S)-VIS		Same		
Approach Reference Code (APRC)	B/III/4000 & D/II/4000		B/III/2400		B/I(S)/4000		Same		
Departure Reference Code (DPRC)	B/III & D/II		Same		B/I(S)		Same		
Runway Surface Material	Asphalt		Same		Turf		Same		
Runway Pavement Strength By Wheel Loading (in thousands of lbs.)	SW: 30.0/DW: 55.0		Same		N/A		Same		
Runway Pavement Strength by PCN	N/A		Same		N/A		Same		
Runway Surface Treatment	None		Same		N/A		Same		
Runway Effective Gradient	0.19%		0.25%		0.20%		0.18%		
Runway Percent Wind Coverage	10.5 knots	93.72%	96.69%	99.28%	93.30%	96.52%	99.25%	99.87%	
	13 knots	96.69%	99.28%	99.87%	96.52%	99.25%	99.87%	99.87%	
	16 knots	99.28%	99.87%	99.87%	99.25%	99.87%	99.87%	99.87%	
	20 knots	99.87%	99.87%	99.87%	99.87%	99.87%	99.87%	99.87%	
Runway Dimensions (L x W)	5,010' x 100'		6,000' x 100'		2,746' x 100'		Same		
Runway End Coordinates	Latitude	43° 30' 56.144" N	43° 31' 45.044" N	43° 30' 46.480" N	Same	43° 31' 26.290" N	43° 31' 7.436" N	43° 31' 25.466" N	43° 31' 6.612" N
	Longitude	89° 46' 18.294" W	89° 46' 7.925" W	89° 46' 20.343" W	Same	89° 46' 36.008" W	89° 46' 9.228" W	89° 46' 34.837" W	89° 46' 8.057" W
Runway End Elevation	976.80' msl		967.20' msl		982.00' msl		977.20' msl		
Runway Displaced Threshold Coordinates	Latitude	N/A	N/A	Same	Same	N/A	N/A	Same	Same
	Longitude	N/A	N/A	Same	Same	N/A	N/A	Same	Same
Runway Displaced Threshold Distance	N/A		N/A		N/A		N/A		
Runway Displaced Threshold Elevation	N/A		N/A		N/A		N/A		
Runway Safety Area Dimensions (width x length beyond end) - Design Std.	150' x 300'		500' x 1,000'		120' x 240'		Same		
Runway Safety Area Dimensions (width x length beyond end) - Actual	150' x 300'		500' x 1,000'		120' x 240'		Same		
Runway Lighting Type	MIRL		Same		None (Cones & A-Frames Mark Runway)		Same		
Runway Protection Zone Dimensions	500' x 1,000' x 700'	500' x 1,000' x 700'	1,000' x 2,500' x 1,750'	500' x 1,700' x 1,010'	250' x 1,000' x 450'	250' x 1,000' x 450'	Same	Same	
Runway Marking Type	Non-Precision		Same		N/A		N/A		
14 CFR Part 77 Approach Slope	34:1	34:1	Same	Same	20:1	20:1	Same	Same	
14 CFR Part 77 Approach Type	NPC	NPC	NPD	Same	VIS	VIS	Same	Same	
Approach Visibility Minimums	1-Mile	1-Mile	1/2 Mile	Same	Visual	Visual	Same	Same	
Type of Aeronautical Survey Required for Approach	VG	VG	Same	Same	NVG	NVG	Same	Same	
Departure Surface (Yes or N/A)	Yes	Yes	Same	Same	N/A	N/A	Same	Same	
Runway Object Free Area Dimensions (width x length beyond end)	500' x 300'		800' x 1,000'		250' x 240'		Same		
Runway Obstacle Free Zone Dimension (width x length beyond end)	400' x 200'		Same		250' x 200'		Same		
13B Approach Surfaces*	4 & 6	4 & 6	Same	Same	2	2	Same	Same	
Runway Visual and Instrument Nav aids	GPS, VOR, Localizer, PAPI-2		GPS, VOR, Localizer, PAPI-4		None		Same		
Touchdown Zone Elevation (TDZE)	980.00' msl	978.00' msl	982.00' msl	Same	980.00' msl	980.00' msl	Same	Same	
Vertical Datum	NAVD88								
Horizontal Datum	NAD83								

\*Tables 3-2, 3-3, & 3-4 in AC 150/5300-13B

Taxiway Data Table								
Existing/Ultimate Taxiway/Taxilane Designation	Width	Taxiway Design Group (TDG)	Taxiway/Taxilane Safety Area Dimension	Taxiway Object Free Area	Taxilane Object Free Area	Taxiway/Taxilane Lighting	Taxiway & Taxilane Separation <sup>1</sup>	Taxiway Edge Safety Margin (TESM)
A	40'	2A	79'	124'	N/A	MITL	62'	7.5'
A1	40'	2A	79'	124'	N/A	MITL	62'	7.5'
A2	40'	2A	79'	124'	N/A	MITL	62'	7.5'
A3	40'	2A	79'	124'	N/A	MITL	62'	7.5'
A4	40'	2A	79'	124'	N/A	MITL	62'	7.5'
A5	40'	2A	79'	124'	N/A	MITL	62'	7.5'
B	40'	2A	79'	124'	N/A	MITL	62'	7.5'
B1	40'	2A	79'	124'	N/A	MITL	62'	7.5'
B2	40'	2A	79'	124'	N/A	MITL	62'	7.5'
C	35'	2A	79'	124'	N/A	MITL	62'	7.5'
C1	35'	2A	79'	124'	N/A	MITL	62'	7.5'
C2	35'	2A	79'	124'	N/A	MITL	62'	7.5'
C3	35'	2A	79'	124'	N/A	MITL	62'	7.5'
D	40'	2A	79'	124'	N/A	MITL	62'	7.5'
GA Hangar Taxilanes 1-3, 5	30'	2A	79'	N/A	110'	None	55'	7.5'
GA Hangar Taxilane 4	20'	1A	49'	N/A	79'	None	39.5'	5'

<sup>1</sup> Objects located inside the TSA & TOFA/Distance from object to taxiway/taxilane centerline. See Table 4-1 in AC 150/5300-13B

RUNWAY DECLARED DISTANCE	EXISTING		ULTIMATE		EXISTING		ULTIMATE	
	1	19	1	19	14	32	14	32
Takeoff Run Available (TORA)	5,010	5,010	6,000	6,000	2,746	2,746	Same	Same
Takeoff Distance Available (TODA)	5,010	5,010	6,000	6,000	2,746	2,746	Same	Same
Accelerate-Stop Distance Available (ASDA)	5,010	5,010	6,000	6,000	2,746	2,746	Same	Same
Landing Distance Available (LDA)	5,010	5,010	6,000	6,000	2,746	2,746	Same	Same

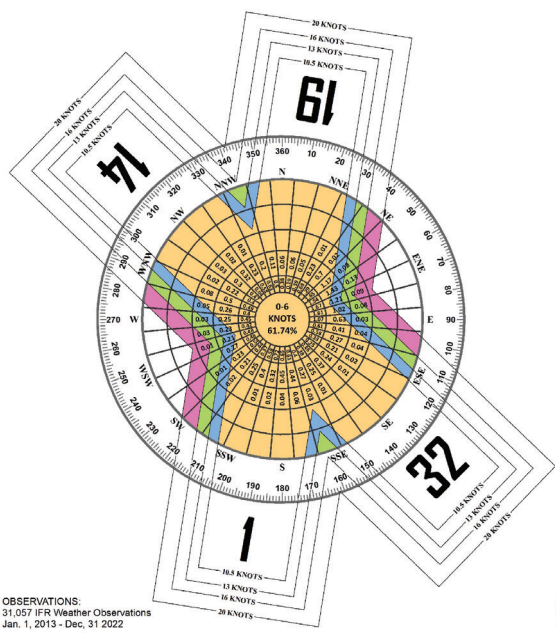
EXISTING MODIFICATIONS TO STANDARDS	
None	
PROPOSED MODIFICATIONS TO STANDARDS	
1	Proposed: Runway Centerline to Parallel Taxiway Centerline - Required: 400'/Existing - 395'

AIRPORT DATA		
City: Baraboo, WI	County: Sauk	Owner: Baraboo Airport Commission
Airport Name & ID: Baraboo/Wisconsin Dells Regional Airport (DLL)	EXISTING	ULTIMATE
Airport Reference Code (ARC)	B-II	C-II
Mean Maximum Temperature of Hottest Month	82.5°	
Airport Elevation (NAVD 88)	979.30' msl	982.00' msl
Airport Navigational Aids	Rotating Beacon PAPI-2, Localizer, DME, GPS	Rotating Beacon, PAPI-4, Localizer, DME, GPS
Airport Reference Point (ARP) Coordinates	Latitude 89° 46' 16.29" W	Longitude 43° 31' 19.27" N
Miscellaneous Facilities	AWOS, SS 100LL/ Jet-A, REILs	AWOS, SS 100LL/ Jet-A, REILs, MALSR
Design Critical Aircraft	Citation Excel/XLS	Embraer Legacy 500
Wingspan of Design Aircraft (Feet)	55.71'	66.42
Approach Speed of Design Aircraft (Knots)	107	135
Undercarriage Width of Design Aircraft (Feet)	14.92	No Data
Magnetic Declination (Degrees)	2° 42' W ± 0° 24'	
Declination Date	11/2023	
Declination Source	ngdc.noaa.gov	
NPIAS Code	Regional GA	
State System Plan Role	Medium GA	

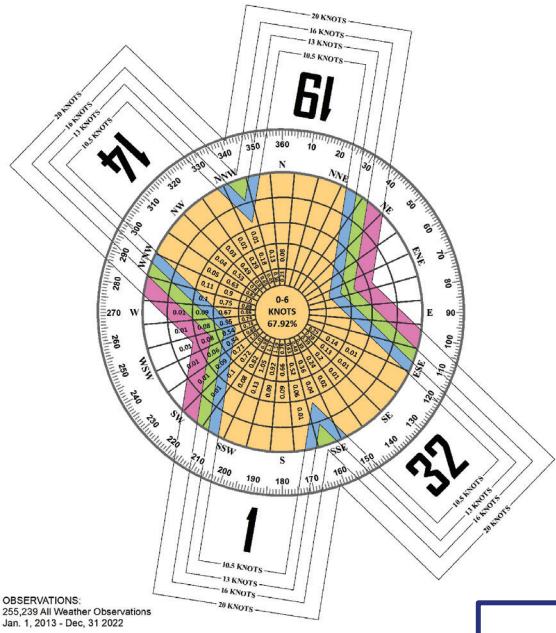
Airport Navaid Ownership	
Navaid	Owner
Localizer	FAA
PAPI-2	Airport
Rotating Beacon	Airport
AWOS	State of Wisconsin
REILs	Airport

IFR WIND COVERAGE				
Runways	10.5 Knots	13 Knots	16 Knots	20 Knots
Runway 1-19	93.93%	97.08%	99.45%	99.93%
Runway 14-32	93.59%	96.72%	99.50%	99.94%
All Runways	97.02%	99.21%	99.89%	100.00%

ALL WEATHER WIND COVERAGE				
Runways	10.5 Knots	13 Knots	16 Knots	20 Knots
Runway 1-19	93.72%	96.69%	99.28%	99.87%
Runway 14-32	93.30%	96.52%	99.25%	99.87%
All Runways	97.71%	99.31%	99.86%	99.98%



OBSERVATIONS:  
31,057 IFR Weather Observations  
Jan. 1, 2013 - Dec. 31 2022



OBSERVATIONS:  
255,239 All Weather Observations  
Jan. 1, 2013 - Dec. 31 2022

DRAFT

No.	REVISIONS	DATE	BY	APPD

Data Sheet	
Baraboo, Wisconsin	
PLANNED BY: Tyler Stuber	DETAILED BY: Chris Donnelly
APPROVED BY: Mike Dmyterko	APPROVED BY: Mike Dmyterko
March 2024	SHEET 2 OF 12



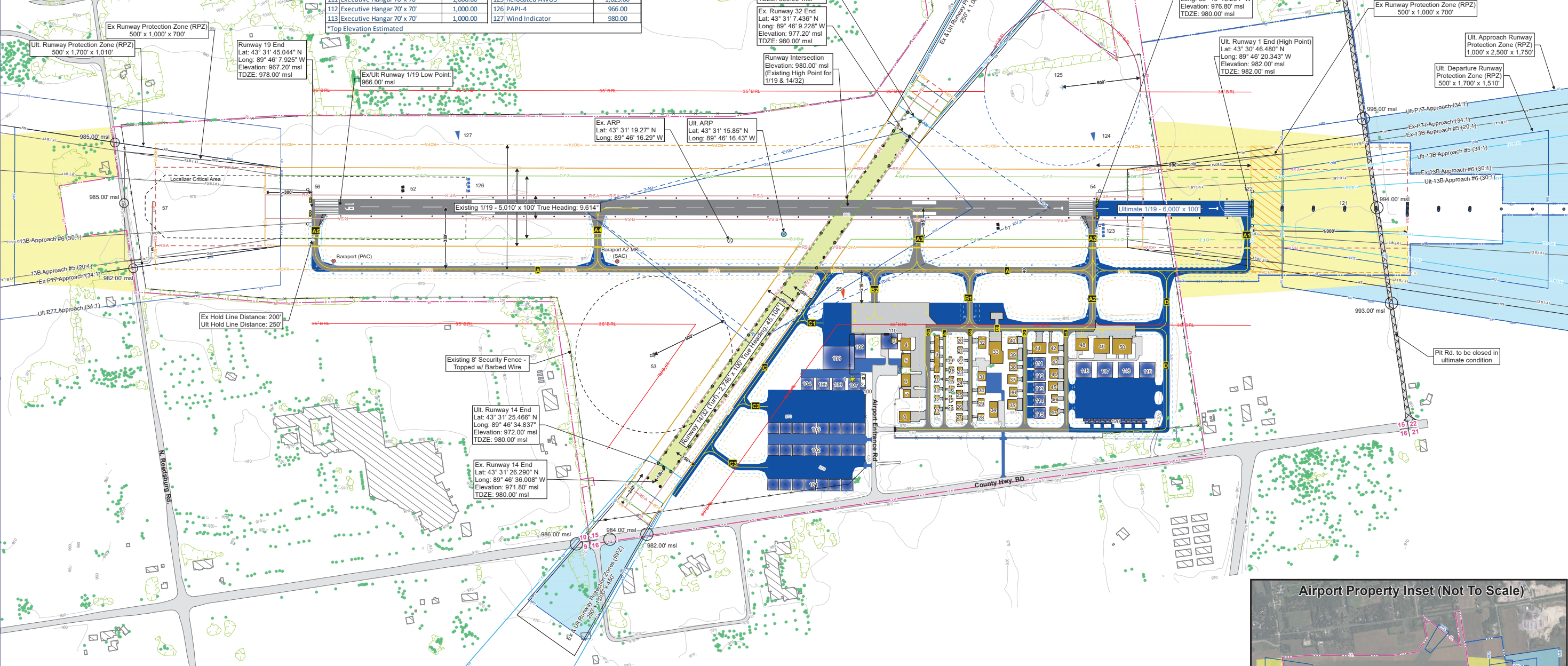
PDF Created: Date: 2/23/2024, Time: 10:36:14 AM, Source Document Path: C:\Users\coffman\Documents\Baraboo\_2022\ALP\_Site\ESR\IMX\DWG\2\_DLL\_DataSheet.mxd



Existing Structures			Ultimate Structures		
ID	Feature	Top Elevation (ft. msl.)	ID	Feature	Top Elevation (ft. msl.)
1	Airport Beacon	1,029.14	34 - 47	Box Hangar	Varies
2	Equipment Shed	984.10	48	Executive Hangar	1,003.59
3	Terminal Building (To Be Relocated)	999.30	49	Executive Hangar	1,007.35
4	Executive Hangar	999.28	50	Executive Hangar	1,009.92
5	Executive Hangar	1,000.36	51	PAPI-2	974.00
6	Executive Hangar	1,001.28	52	PAPI-2	965.86
7	Executive Hangar	997.55	53	AWOS Equipment	1,019.75
8	Executive Hangar	999.72	54	REILs	979.31
9	T-Hangars	999.91	55	Wind Indicator	1,000.12
10-32	Box Hangar	Varies	56	REILs	968.50
33	TC's Air Care	1,003.04	57	Localizer	975.91

ID	Feature	Top Elevation (ft. msl.)*	ID	Feature	Top Elevation (ft. msl.)*
100	Relocated Beacon	1,029.14	114	Executive Hangar 70' x 70'	1,000.00
101	70 x 70 Hangars	1,000.00	115	Executive Hangar 70' x 70'	1,000.00
102	70 x 70 Hangars	1,000.00	116	Executive Hangar 100' x 100'	1,005.00
103	70 x 70 Hangars	1,000.00	117	Executive Hangar 100' x 100'	1,005.00
104	80' x 80' Hangar	1,005.00	118	Executive Hangar 100' x 100'	1,005.00
105	80' x 80' Hangar	1,005.00	119	Executive Hangar 100' x 100'	1,005.00
106	80' x 80' Hangar	1,005.00	120	Nested T-Hangars (12)	990.00
107	80' x 80' Hangar	1,005.00	121	MALSR	0.00
108	Conventional Hangar 200' x 150'	1,010.00	122	REILs	986.00
109	New Terminal Building	990.00	123	PAPI-4	976.00
110	Conventional Hangar 100' x 100'	1,005.00	124	Wind Indicator	995.00
111	Executive Hangar 70' x 70'	1,000.00	125	Relocated AWOS	1,025.00
112	Executive Hangar 70' x 70'	1,000.00	126	PAPI-4	966.00
113	Executive Hangar 70' x 70'	1,000.00	127	Wind Indicator	980.00

Survey Control Stations				
Name	Type	Latitude	Longitude	
BARAPORT AZ MK	PAC	43° 31' 26.507" N	89° 46' 16.592" W	
BARAPORT	SAC	43° 31' 44.212" N	89° 46' 12.844" W	



**Legend**

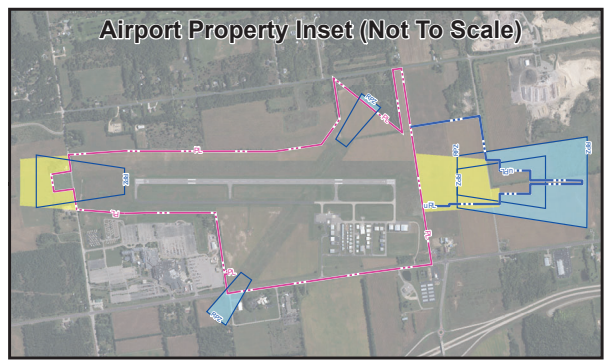
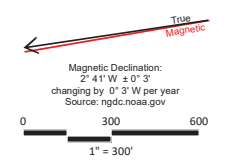
Existing Airport Property Line	Ultimate Turf Runway	Ultimate AWOS	Ultimate Runway Object Free Area (ROFA)
Ultimate Airport Property Line	Runway Lighting	Runway Lighting	Existing Runway Obstacle Free Zone (ROFZ)
Existing Easement	Taxiway Lighting	Taxiway Lighting	Ultimate Runway Obstacle Free Zone (ROFZ)
Ultimate Easement	Runway End Identifier Lighting (REILs)	Runway End Identifier Lighting (REILs)	Taxiway/Taxilane Safety Area (TSA)
Existing Airport Reference Point (ARP)	Threshold Lighting	Threshold Lighting	Taxiway/Taxilane Object Free Area (TOFA)
Ultimate Airport Reference Point (ARP)	Ultimate MALSR	Ultimate MALSR	Existing Part 77 Approach Surface
Primary & Secondary Control Station (PACS/SACS)	Existing Wind Indicator	Existing Wind Indicator	Ultimate Part 77 Approach Surface
Existing Critical Area	Ultimate Wind Indicator	Ultimate Wind Indicator	Existing 13B Approach Surface (#)
Ultimate Critical Area	Localizer	Localizer	Ultimate 13B Approach Surface (#)
Existing Airport Beacon	Existing Runway Protection Zone (RPZ)	Existing Runway Protection Zone (RPZ)	Ultimate Precision Obstacle Free Zone (POFZ)
Ultimate Airport Beacon	Ultimate Runway Protection Zone (RPZ)	Ultimate Runway Protection Zone (RPZ)	Vegetation Point
Existing Runway/Taxiway Pavement	Existing Runway Visibility Zone (RVZ)	Existing Runway Visibility Zone (RVZ)	Vegetation Area
Existing Apron	Ultimate Runway Visibility Zone (RVZ)	Ultimate Runway Visibility Zone (RVZ)	Ultimate 35' BRL
Ultimate Airfield Pavement	Existing PAPI	Existing PAPI	Ground Contour
Existing Turf Runway	Ultimate PAPI	Ultimate PAPI	Section Corners
Existing Turf Runway Marker	Existing AWOS	Existing AWOS	Existing Runway Object Free Area (ROFA)



**FOR APPROVAL BY:**  
City of Baraboo/City of Wisconsin Dells - Town & village of Lake Delton

Approved By: \_\_\_\_\_  
Name \_\_\_\_\_  
Date \_\_\_\_\_

- General Notes**
1. Survey by Martinez Geospatial (09/08/2022).
  2. Existing runway endpoints and elevation from adp.faa.gov.
  3. For clarity, only ultimate condition TSA's and TOFA's shown.
  4. Required landside dimensions shown on Terminal Area Drawing.
  5. For clarity, only ultimate condition Part 77 & 13B Approach Surfaces shown for Runway 14/32.
  6. Road Intersection Elevation includes height adjustment.
  7. Required landside dimensions shown on Terminal Area Drawing.
  8. No Municipal or County boundaries are in view at this scale.



No.	REVISIONS	DATE	BY	APPD

**Baraboo/Wisconsin Dells Regional Airport**

**Airport Layout Plan Drawing**

**Baraboo, Wisconsin**

**DRAFT**

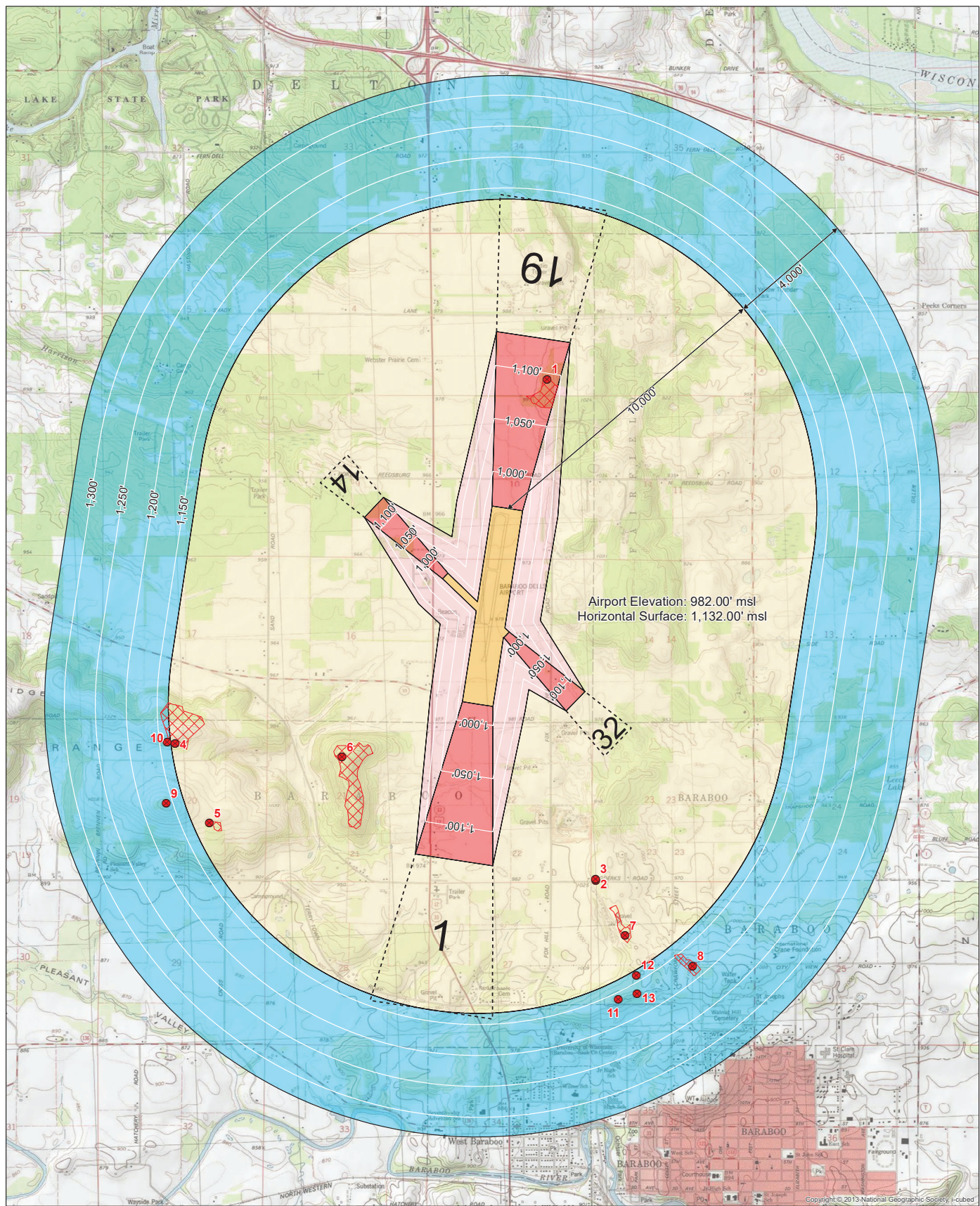
PLANNED BY: Tyler Stuber  
 DETAILED BY: Chris Donnelly  
 APPROVED BY: Mike Dmyterko  
 March 2024

SHEET 3 OF 12

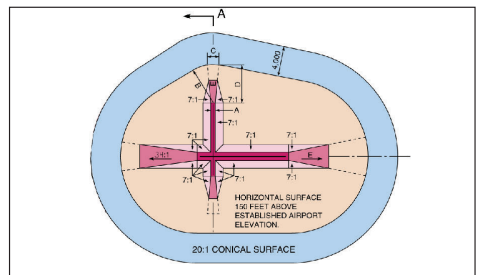
PDF Created: Date: 2/23/2024, Time: 10:36:05 AM, Source Document Path: C:\Users\corm\Documents\Coffman - sp\_GIS\DLL\_Baraboo\_2022\ALP\_Series\RMX\Da03\_DLL\_ALD.mxd



PDF Created: Date: 2/23/2024, Time: 10:38:33 AM, Source Document Path: C:\Users\cm\Documents\Coffman - sp GIS\DLL Baraboo 2022\ALP Set\ESR\IMX\Draw4\_DLL\_Part7.mxd



Obstruction Table							
ID	Feature	Ground Elevation (ft. msl.)	AGL (ft.)	Top Elevation (ft. msl.)	Surface Obstructed	Penetration Value (ft.)	Remediation
1	Tree	1,022.94	90.42	1,113.36	Ultimate 19 Approach	18.93	Remove Tree
2	Tree	1,051.03	86.94	1,137.97	Horizontal	5.97	Remove Tree
3	Tree	1,050.85	82.91	1,133.76	Horizontal	1.76	Remove Tree
4	Tree	Unavailable	Unavailable	1,183.00	Horizontal	51.00	Remove Tree
5	Tree	Unavailable	Unavailable	1,154.00	Horizontal	22.00	Remove Tree
6	Tree	Unavailable	Unavailable	1,206.00	Horizontal	74.00	Remove Tree
7	Tree	Unavailable	Unavailable	1,162.00	Horizontal	30.00	Remove Tree
8	Tree	1,104.40	102.10	1,206.50	Conical	26.03	Remove Tree
9	Tree	Unavailable	Unavailable	1,220.00	Conical	59.78	Remove Tree
10	Tree	Unavailable	Unavailable	1,198.00	Conical	60.56	Remove Tree
11	Tree	Unavailable	Unavailable	1,201.00	Conical	39.78	Remove Tree
12	Tree	Unavailable	Unavailable	1,181.00	Conical	40.52	Remove Tree
13	Tree	1,119.00	60.00	1,179.00	Conical	12.23	Remove Tree



DIM	ITEM	DIMENSIONAL STANDARDS (FEET)					
		VISUAL RUNWAY		NON-PRECISION INSTRUMENT RUNWAY		PRECISION INSTRUMENT RUNWAY	
A	WIDTH OF PRIMARY SURFACE AND APPROACH SURFACE WIDTH AT INNER END	250	500	500	500	1,000	1,000
B	RADIUS OF HORIZONTAL SURFACE	5,000	5,000	5,000	10,000	10,000	10,000
C	APPROACH SURFACE WIDTH AT END	1,250	1,500	2,000	3,500	4,900	16,000
D	APPROACH SURFACE LENGTH	5,000	5,000	5,000	10,000	10,000	*
E	APPROACH SLOPE	20:1	20:1	20:1	34:1	34:1	*

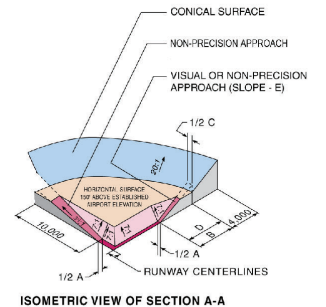
A - UTILITY RUNWAYS  
 B - RUNWAYS LARGER THAN UTILITY  
 C - VISIBILITY MINIMUMS GREATER THAN 3/4 MILE  
 D - VISIBILITY MINIMUMS AS LOW AS 3/4 MILE  
 \* - PRECISION INSTRUMENT APPROACH SLOPE IS 50:1 FOR INNER 10,000 FEET AND 40:1 FOR AN ADDITIONAL 40,000 FEET

**Legend**

- Obstruction Point
- ⊗ Obstruction Grouping
- Primary Surface
- Approach Surface
- Transitional Surface
- Horizontal Surface
- Conical Surface

Magnetic Declination:  
 2° 41' W ± 0" 3'  
 changing by 0" 3' W per year  
 Source: ngd.noaa.gov

0 2,000 4,000  
 1" = 2,000'



**General Notes**

- Survey by Martinez Geospatial (09/08/2022).
- Obstruction Points analyzed from MTZ Survey and faa.adip.gov
- Obstructions within groupings represent tallest man made and/or natural and/or terrain feature.
- Remaining SOP 2.0 checklist items shown on sheet 5.
- Airport vicinity zoning limitations are established per the Village of Lake Delton, WI Code of Ordinances, Chapter 63 (Ord. 11-98-326, Passed November 23, 1998). The height of buildings and trees may not exceed the elevations indicated on the height limitation zoning map referenced in Section 63.01.

No.	REVISIONS	DATE	BY	APPD

**DRAFT**

**Baraboo/Wisconsin Dells Regional Airport**

**Airport Airspace Drawing**

Baraboo, Wisconsin

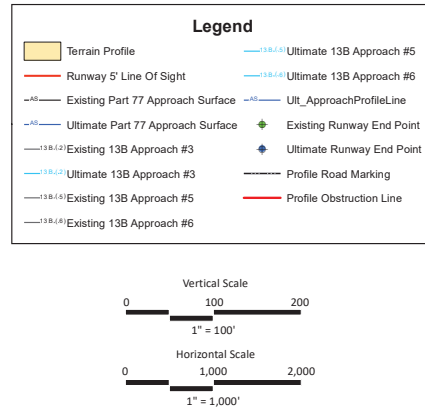
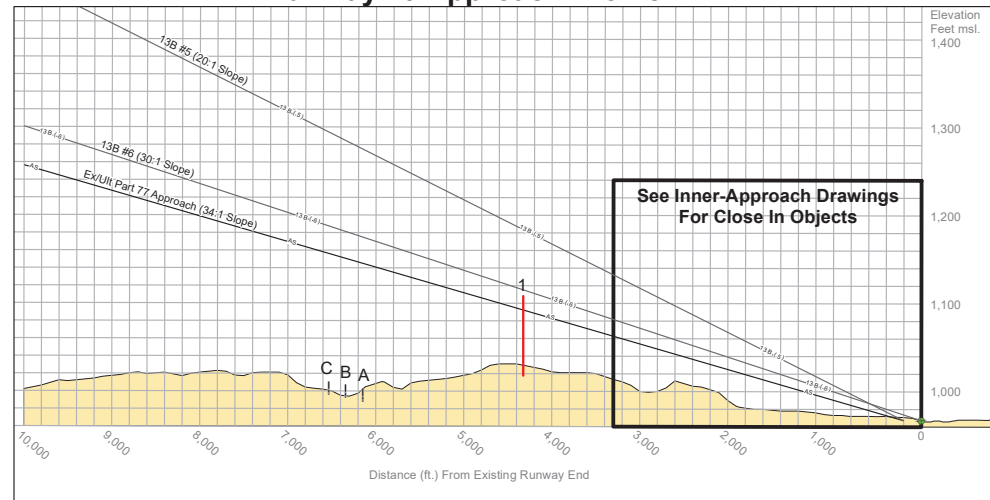
PLANNED BY: Tyler Stuber  
 DETAILED BY: Chris Donnelly  
 APPROVED BY: Mike Dmyterko

March 2024 SHEET 4 OF 12

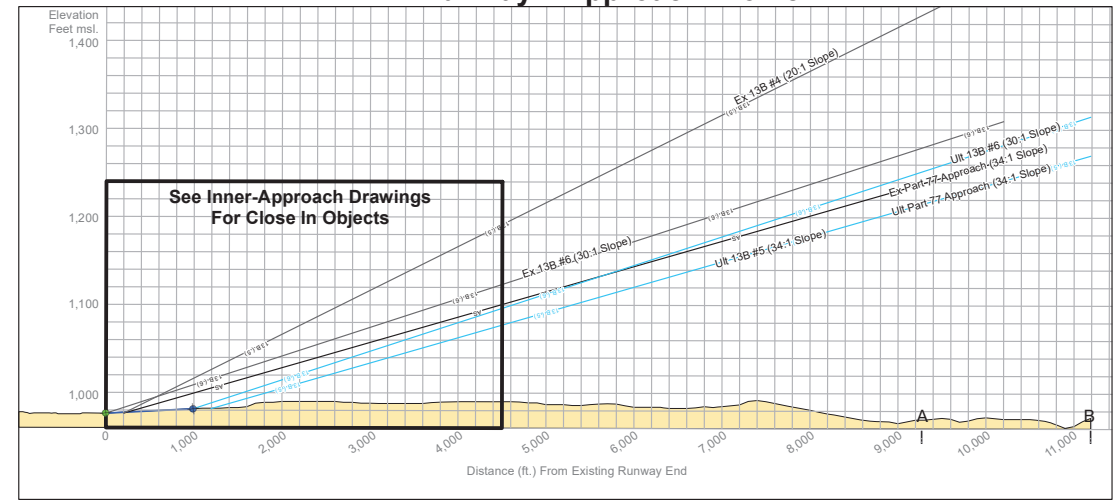
THE PREPARATION OF THESE DOCUMENTS WAS FINANCED IN PART THROUGH A PLANNING GRANT FROM THE FEDERAL AVIATION ADMINISTRATION AS PROVIDED UNDER SECTION 566 OF THE AIRPORT AND AIRWAY IMPROVEMENT ACT OF 1982, AS AMENDED. THE CONTENTS DO NOT NECESSARILY REFLECT THE OFFICIAL VIEW OR POLICY OF THE FAA. ACCEPTANCE OF THESE DOCUMENTS BY THE FAA DOES NOT IN ANY WAY CONSTITUTE A COMMITMENT OF THE PART OF THE UNITED STATES TO PARTICIPATE IN ANY DEVELOPMENT DESCRIBED HEREIN NOR DOES IT INDICATE THAT THE PROPOSED DEVELOPMENT ENVIRONMENTALLY ACCEPTABLE IN ACCORDANCE WITH THE APPROPRIATE PUBLIC LAWS



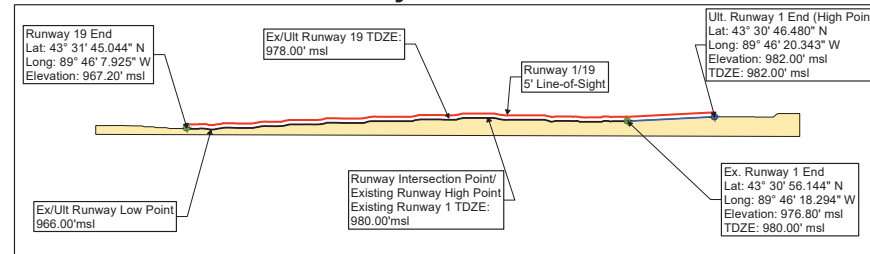
### Runway 19 Approach Profile



### Runway 1 Approach Profile



### Runway 1/19 Profile



Runway 19 Outer-Approach Obstructions							
ID	Feature	Ground Elevation (ft. msl.)	AGL (ft.)	Top Elevation (ft. msl.)	Penetration Value		Remediation
					Existing Approach Surface	Ultimate Approach Surface	
1	Tree	1022.94	90.42	1113.36	18.93	18.93	Remove Tree

Runway 19 Outer-Approach Road Points						
ID	Feature	Ground Elevation (ft. msl.)	Adjustment (ft.)	Top Elevation (ft. msl.)	Existing Approach Surface Clearance (ft.)	Ultimate Approach Surface Clearance (ft.)
A	Shady Lane	988.26	15	1003.26	144.72	144.72
B	Shady Lane	992.307	15	1007.31	146.4	146.4
C	Shady Lane	996.17	15	1011.17	148.22	148.22

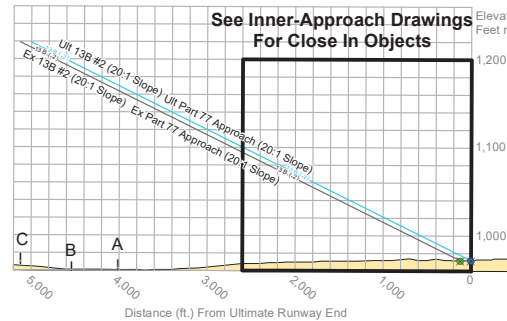
Runway 1 Outer-Approach Obstructions							
ID	Feature	Ground Elevation (ft. msl.)	AGL (ft.)	Top Elevation (ft. msl.)	Penetration Value		Remediation
					Existing Approach Surface	Ultimate Approach Surface	
No Obstructions							

Runway 1 Outer-Approach Road Points						
ID	Feature	Ground Elevation (ft. msl.)	Adjustment (ft.)	Top Elevation (ft. msl.)	Existing Approach Surface Clearance (ft.)	Ultimate Approach Surface Clearance (ft.)
A	US 12	940.23	15.00	955.23	228.37	264.51
B	US 12	945.53	15.00	960.53	279.45	315.59

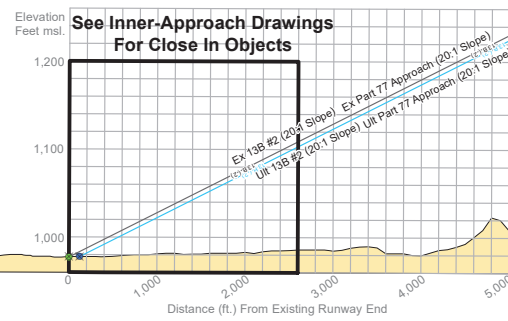
Runway 14 Outer-Approach Obstructions							
ID	Feature	Ground Elevation (ft. msl.)	AGL (ft.)	Top Elevation (ft. msl.)	Penetration Value		Remediation
					Existing Approach Surface	Ultimate Approach Surface	
No Obstructions							

Runway 14 Outer-Approach Road Points						
ID	Feature	Ground Elevation (ft. msl.)	Adjustment (ft.)	Top Elevation (ft. msl.)	Existing Approach Surface Clearance (ft.)	Ultimate Approach Surface Clearance (ft.)
A	N. Reedsburg	958.12	15.00	973.12	193.28	199.28
B	N. Reedsburg	964.68	15.00	979.68	242.12	248.12
C	N. Reedsburg	955.46	15.00	970.46	222.23	228.23

### Runway 14 Approach Profile



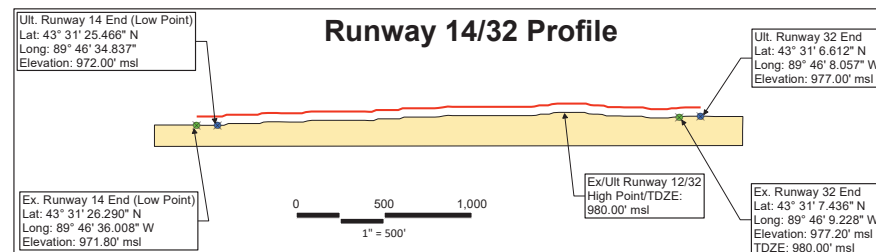
### Runway 32 Approach Profile



Runway 32 Outer-Approach Obstructions							
ID	Feature	Ground Elevation (ft. msl.)	AGL (ft.)	Top Elevation (ft. msl.)	Penetration Value		Remediation
					Existing Approach Surface	Ultimate Approach Surface	
No Obstructions							

Runway 32 Outer-Approach Road Points						
ID	Feature	Ground Elevation (ft. msl.)	Adjustment (ft.)	Top Elevation (ft. msl.)	Existing Approach Surface Clearance (ft.)	Ultimate Approach Surface Clearance (ft.)
No Transportation Intersections						

### Runway 14/32 Profile



- General Notes**
- Survey by Martinez Geospatial (09/08/2022).
  - Obstruction Points analyzed from MTZ Survey (9/8/2022), and faa-adip.gov
  - Approach terrain profile represents the highest elevation across the width of the approach surfaces.
  - Runway terrain profile represents the highest elevation across the width of the runway.

No.	REVISIONS	DATE	BY	APPD

**DRAFT**

Baraboo/Wisconsin Dells Regional Airport  
**Approach Profile Drawing**  
Baraboo, Wisconsin

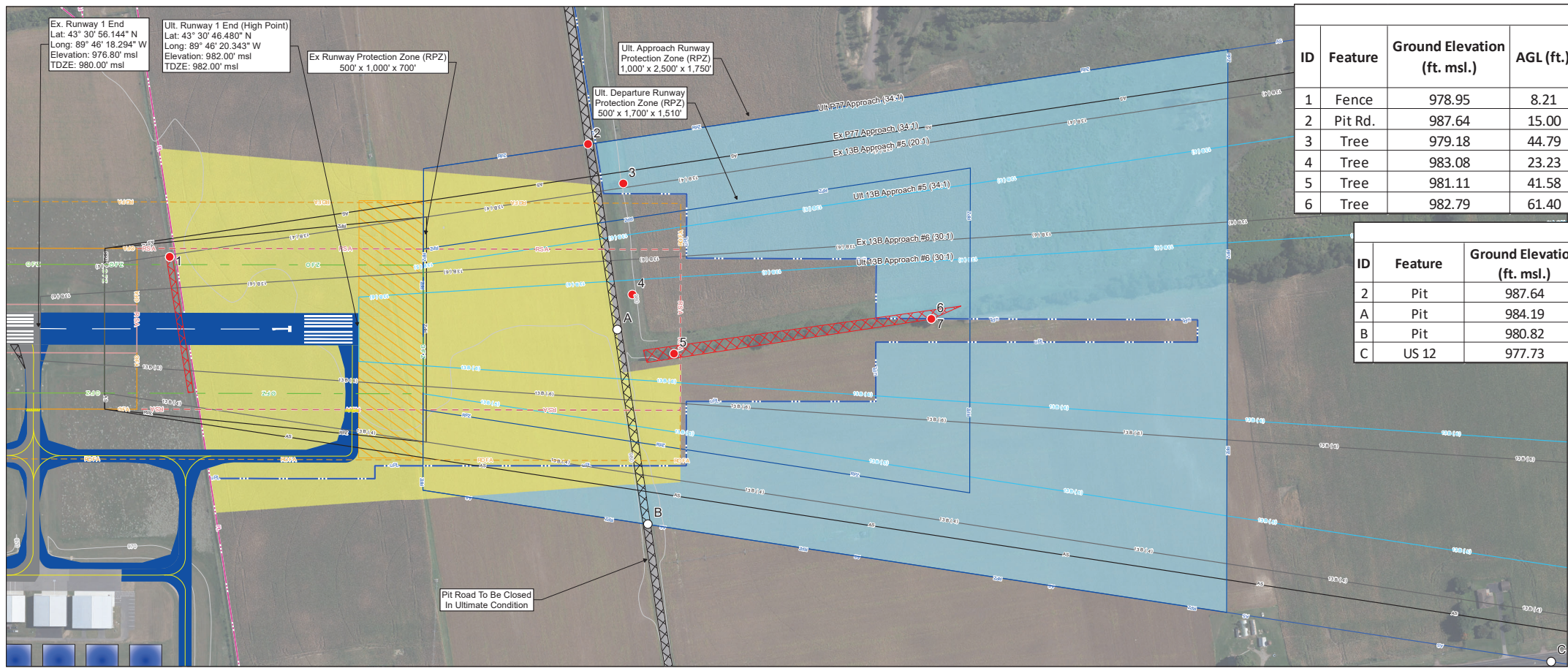
PLANNED BY: Tyler Stuber  
 DETAILED BY: Chris Donnelly  
 APPROVED BY: Mike Dmyterko  
 March 2024

SHEET **5** OF **12**

PDF Created: Date: 2/23/2024, Time: 10:38:10 AM, Source Document Path: C:\Users\cdm\Documents\Coffman Associates\Incoffman - sp\_GIS\DLL\_Baraboo\_2022\ALP\_Set\ESR\MMX\Da05\_DLL\_ApproachProfile.mxd

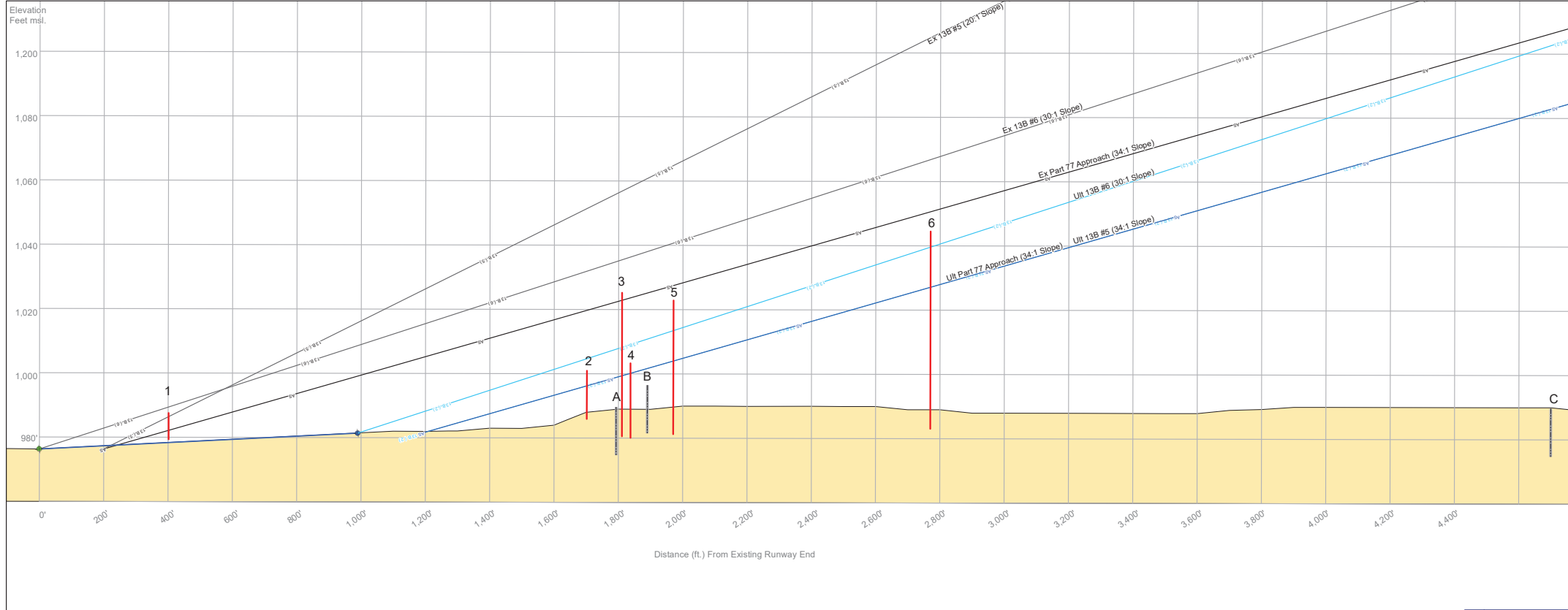


PDF Created: Date: 2/23/2024, Time: 10:38:38 AM, Source Document Path: C:\Users\corm\Documents\Coffman - sp\_GIS\DLL\_Baraboo\_2022\ALP\_Set\ESR\IMX\Da06\_DLL\_InnerApp\_1.mxd



ID	Feature	Ground Elevation (ft. msl.)	AGL (ft.)	Top Elevation (ft. msl.)	Penetration Value					Remediation
					Existing Part	Ultimate Part	Existing	Ultimate	Ultimate	
					77 Approach	77 Approach	13B #4	13B #4	13B #6	
1	Fence	978.95	8.21	987.16	4.42	N/A	0.27	N/A	N/A	Relocate Fence
2	Pit Rd.	987.64	15.00	1,002.64	N/A	5.57	N/A	N/A	N/A	To Be Closed
3	Tree	979.18	44.79	1,023.97	N/A	23.69	N/A	N/A	N/A	Trim/Remove
4	Tree	983.08	23.23	1,006.31	N/A	5.17	N/A	N/A	N/A	Trim/Remove
5	Tree	981.11	41.58	1,022.69	N/A	17.72	N/A	1.64	7.99	Trim/Remove
6	Tree	982.79	61.40	1,044.19	N/A	15.71	N/A	N/A	2.84	Lower/Relocate

ID	Feature	Ground Elevation (ft. msl.)	Adjustment (ft.)	Top Elevation (ft. msl.)	Existing Approach	Ultimate Approach
					Surface Clearance (ft.)	Surface Clearance (ft.)
2	Pit	987.64	15.00	1,002.64	28.75	N/A - To Be Removed
A	Pit	984.19	15.00	999.19	34.89	N/A - To Be Removed
B	Pit	980.82	15.00	995.82	41.09	N/A - To Be Removed
C	US 12	977.73	15.00	992.73	126.81	92.49



**Legend**

- Existing Airport Property Line
- Ultimate Airport Property Line
- Existing Easement
- Ultimate Easement
- Existing Runway/Taxiway Pavement
- Existing Apron
- Ultimate Airfield Pavement
- Existing Paved Road/Parking
- Pavement To Be Removed
- Existing Fence
- Existing Gate
- Ult Fence
- Ult Gate
- Ultimate PAPI
- Ultimate AWOS
- Taxiway Lighting
- Runway End Identifier Lighting (REILs)
- Threshold Lighting
- Ultimate MALSR
- Existing Runway Protection Zone (RPZ)
- Ultimate Runway Protection Zone (RPZ)
- Existing Runway Safety Area (RSA)
- Ultimate Runway Safety Area (RSA)
- Existing Runway Object Free Area (ROFA)
- Ultimate Runway Object Free Area (ROFA)
- Existing Runway Obstacle Free Zone (ROFZ)
- Ultimate Runway Obstacle Free Zone (ROFZ)
- Existing Part 77 Approach Surface
- Ultimate Part 77 Approach Surface
- Existing 13B Approach Surface (#)
- Ultimate 13B Approach Surface (#)
- Ultimate Precision Obstacle Free Zone (POFZ)
- Ground Contour
- Road Intersection Point
- Obstruction Point
- Obstruction Grouping
- Profile Road Intersection
- Profile Obstruction Marking

- General Notes**
- Survey by Martinez Geospatial (09/08/2022).
  - Obstruction Points analyzed from MTZ Survey and faa.adip.gov
  - Obstructions within groupings represent tallest man made and/or natural and/or terrain feature.
  - Approach terrain profile represents the highest elevation across the width of the approach surfaces.

No.	REVISIONS	DATE	BY	APPD

**DRAFT**

**Baraboo/Wisconsin Dells Regional Airport**  
**Runway 1 Inner-Approach**  
**Profile Drawing**  
 Baraboo, Wisconsin

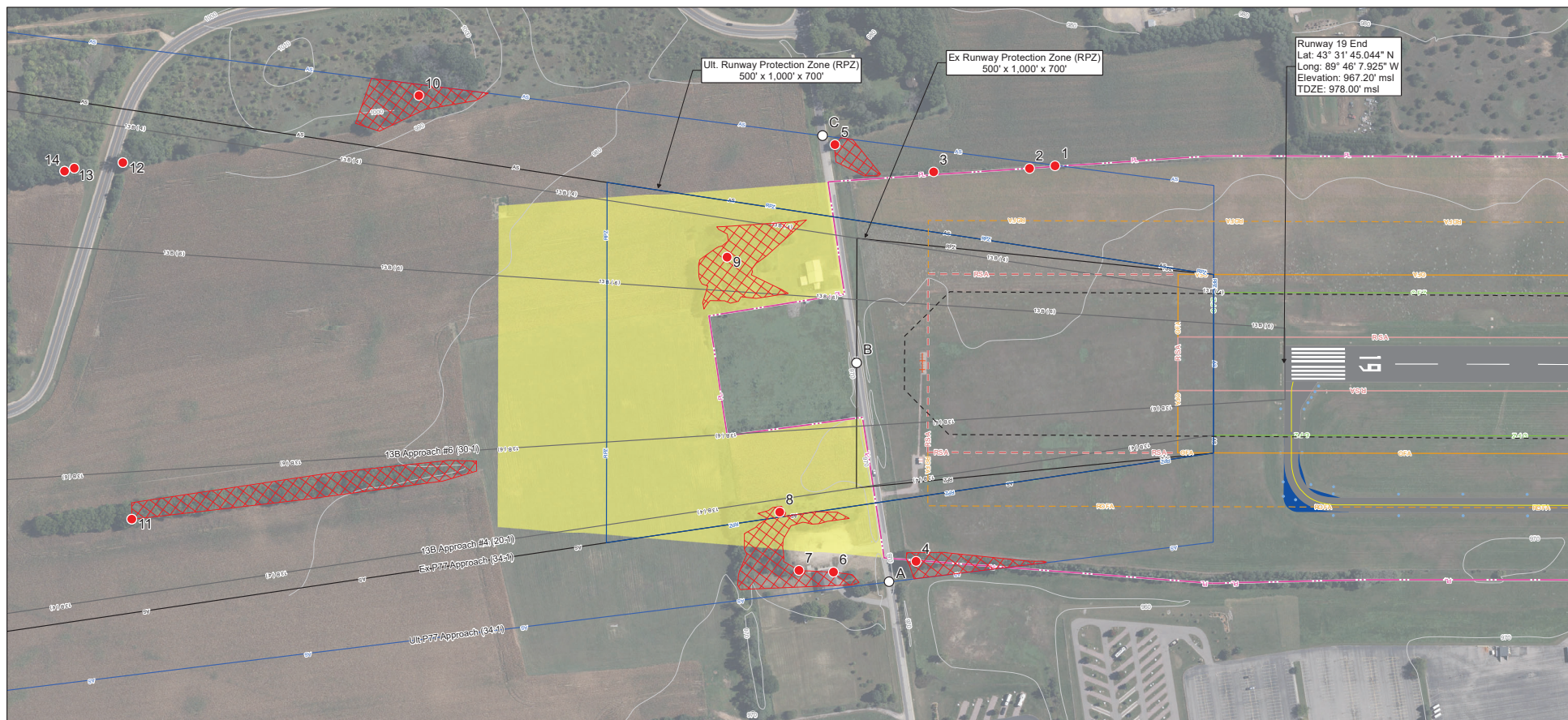
PLANNED BY: Tyler Stuber  
 DETAILED BY: Chris Donnelly  
 APPROVED BY: Mike Dmyterko

March 2024      SHEET 6 OF 12

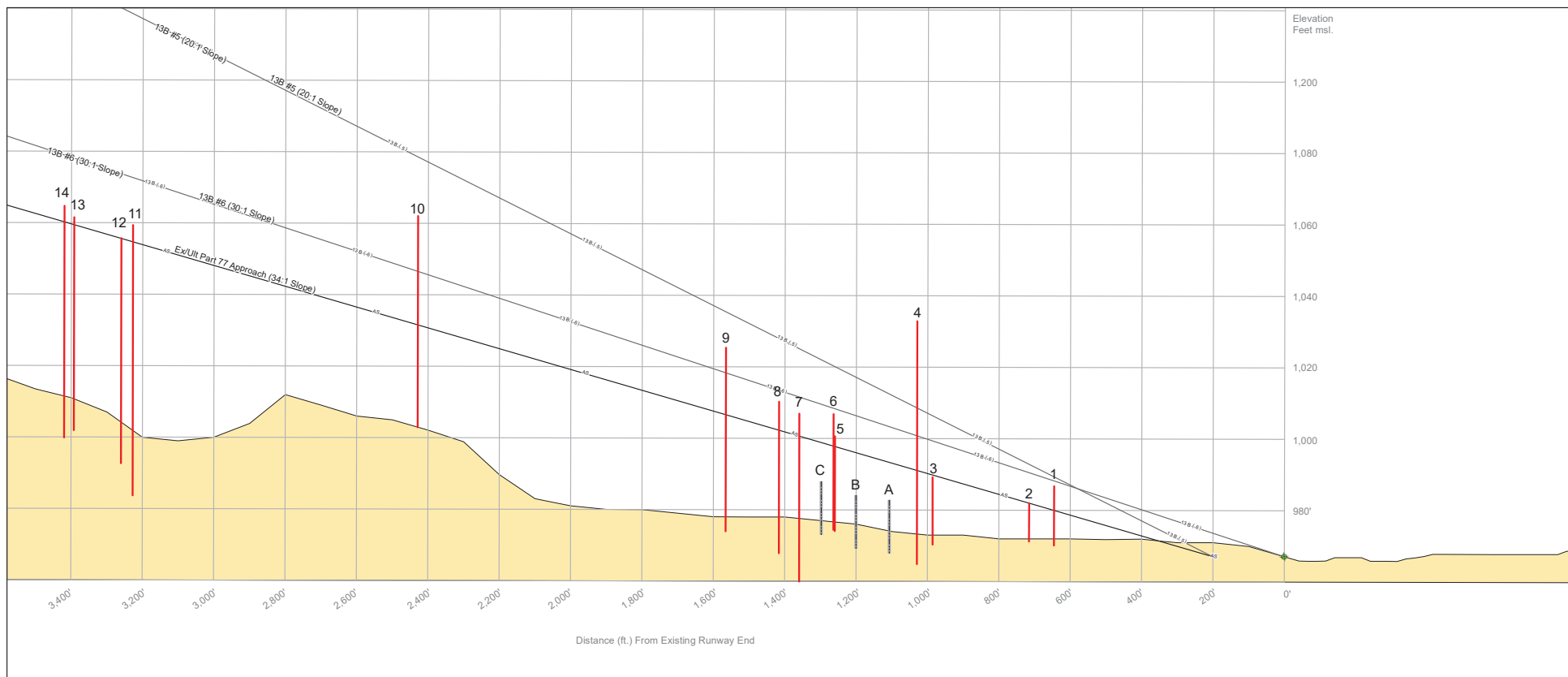
THE PREPARATION OF THESE DOCUMENTS WAS FINANCED IN PART THROUGH A PLANNING GRANT FROM THE FEDERAL AVIATION ADMINISTRATION AS PROVIDED UNDER SECTION 566 OF THE AIRPORT AND AIRWAY IMPROVEMENT ACT OF 1982, AS AMENDED. THE CONTENTS DO NOT NECESSARILY REFLECT THE OFFICIAL VIEW OR POLICY OF THE FAA. ACCEPTANCE OF THESE DOCUMENTS BY THE FAA DOES NOT IN ANY WAY CONSTITUTE A COMMITMENT OF THE PART OF THE UNITED STATES TO PARTICIPATE IN ANY DEVELOPMENT DESCRIBED HEREIN NOR DOES IT INDICATE THAT THE PROPOSED DEVELOPMENT IS ENVIRONMENTALLY ACCEPTABLE IN ACCORDANCE WITH THE APPROPRIATE PUBLIC LAWS



PDF Created: Date: 2/23/2024, Time: 10:40:42 AM, Source Document Path: C:\Users\cdm\Documents\Coffman Associates Inc\Baraboo\_2022\ALP\_Set\ESR\IMX\Da07\_DLL\_InnerApp\_19.mxd



ID	Feature	Ground Elevation (ft. msl.)	AGL (ft.)	Top Elevation (ft. msl.)	Penetration Value		Remediation
					Existing Part	Ultimate Part	
					77 Approach	77 Approach	
1	Tree	971.73	16.63	988.36	N/A	8.08	Trim/Remove
2	Tree	971.99	10.73	982.72	N/A	0.33	Trim/Remove
3	Tree	971.78	18.95	990.73	N/A	0.44	Trim/Remove
4	Tree	968.54	68.07	1,036.61	N/A	44.94	Trim/Remove
5	Tree	976.21	32.38	1,008.59	N/A	10.17	Trim/Remove
6	Flagpole	974.62	26.47	1,001.09	N/A	2.62	Lower/Relocate
7	Tree	972.73	46.98	1,019.71	N/A	18.39	Trim/Remove
8	Tree	971.38	42.43	1,013.81	N/A	10.89	Trim/Remove
9	Tree	974.26	51.36	1,025.62	18.32	18.32	Trim/Remove
10	Tree	1,002.88	59.13	1,062.01	N/A	29.30	Trim/Remove
11	Tree	983.50	75.65	1,059.15	2.85	2.85	Trim/Remove
12	Tree	994.71	63.04	1,057.75	0.65	0.65	Trim/Remove
13	Tree	1,001.72	59.64	1,061.36	0.26	0.26	Trim/Remove
14	Tree	1,000.59	64.93	1065.523	3.63	3.63	Trim/Remove



**General Notes**  
 1. Survey by Martinez, Geospatial (09/08/2022).  
 2. Obstruction Points analyzed from MTZ Survey and faa.adip.gov.  
 3. Obstructions within groupings represent tallest man made and/or natural and/or terrain feature.  
 4. Approach terrain profile represents the highest elevation across the width of the approach surfaces.

**Legend**

- Existing Airport Property Line
- Existing Easement
- Ultimate Easement
- Existing Runway/Taxiway Pavement
- Existing Apron
- Ultimate Airfield Pavement
- Existing Paved Road/Parking
- Existing Fence
- Existing Gate
- Ult\_Fence
- Ult\_Gate
- Taxiway Lighting
- Runway End Identifier Lighting (REILs)
- Threshold Lighting
- Existing Runway Protection Zone (RPZ)
- Ultimate Runway Protection Zone (RPZ)
- Existing Runway Safety Area (RSA)
- Ultimate Runway Safety Area (RSA)
- Existing Runway Object Free Area (ROFA)
- Ultimate Runway Object Free Area (ROFA)
- Existing Runway Obstacle Free Zone (ROFZ)
- Ultimate Runway Obstacle Free Zone (ROFZ)
- Existing Part 77 Approach Surface
- Ultimate Part 77 Approach Surface
- Existing 13B Approach Surface (#)
- Ground Contour
- Road Intersection Point
- Obstruction Point
- Obstruction Grouping
- Profile Road Intersection
- Profile Obstruction Marking

Vertical Scale: 1" = 20'  
 Horizontal Scale: 1" = 200'

Magnetic Declination: 2° 41' W ± 0' 3" changing by 0' 3" W per year  
 Source: ngdc.noaa.gov

**DRAFT**

**Baraboo/Wisconsin Dells Regional Airport**  
**Runway 19 Inner-Approach Profile Drawing**  
 Baraboo, Wisconsin

No.	REVISIONS	DATE	BY	APP'D

PLANNED BY: Tyler Stuber  
 DETAILED BY: Chris Donnelly  
 APPROVED BY: Mike Dmyterko

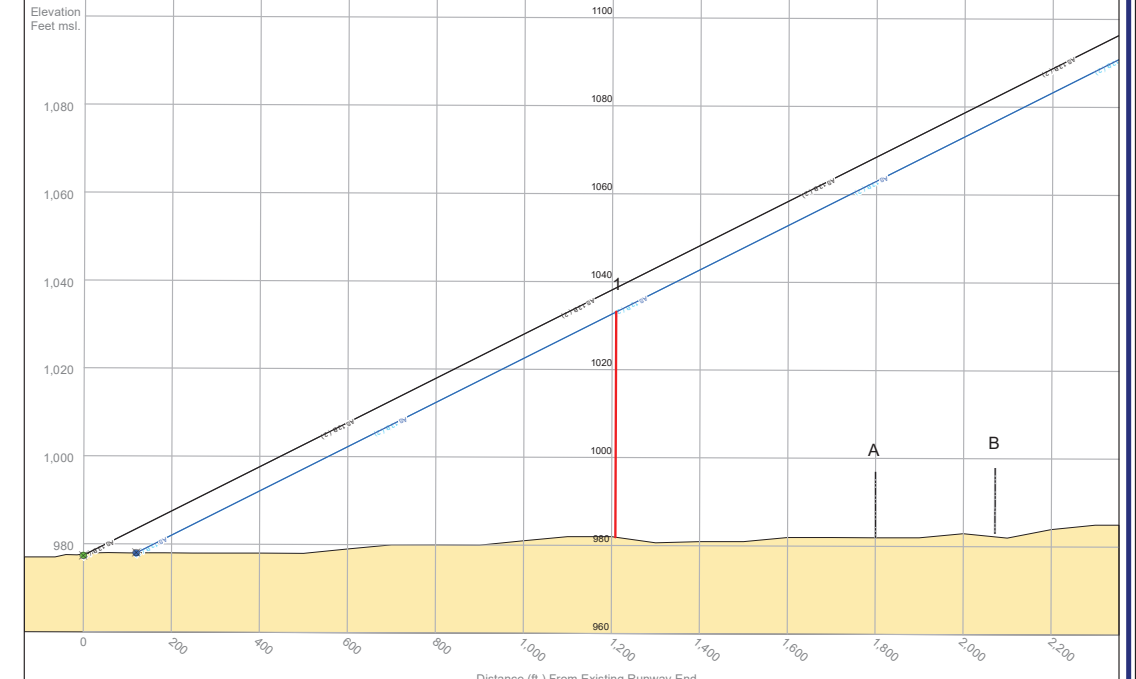
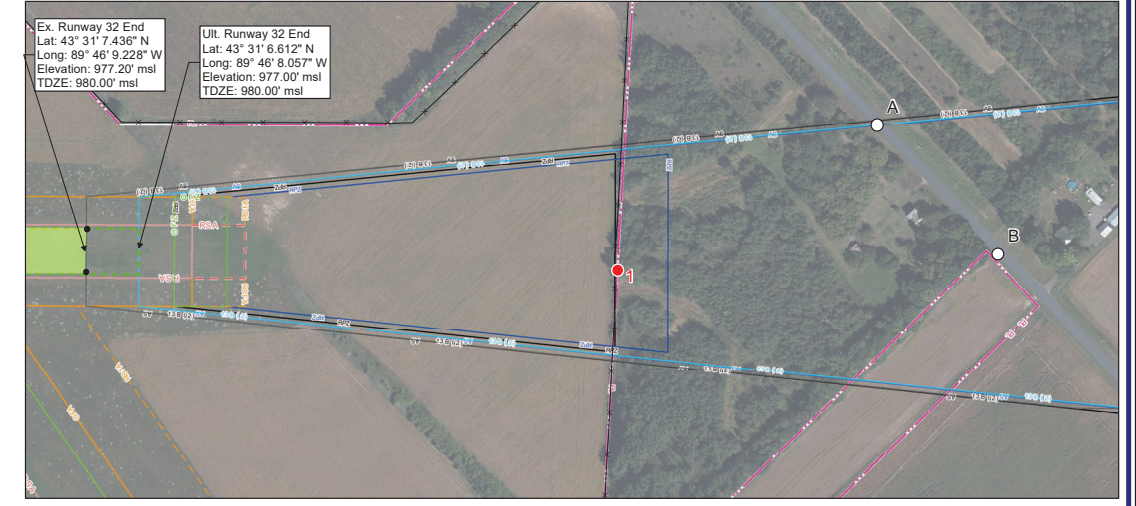
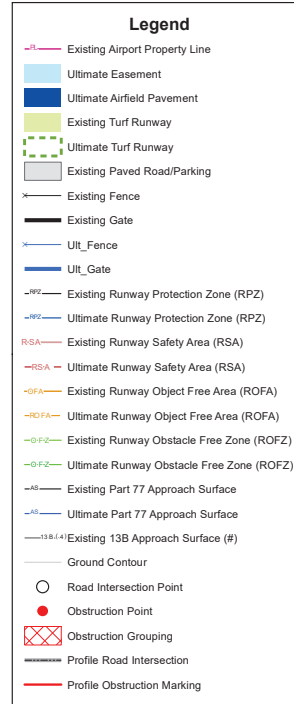
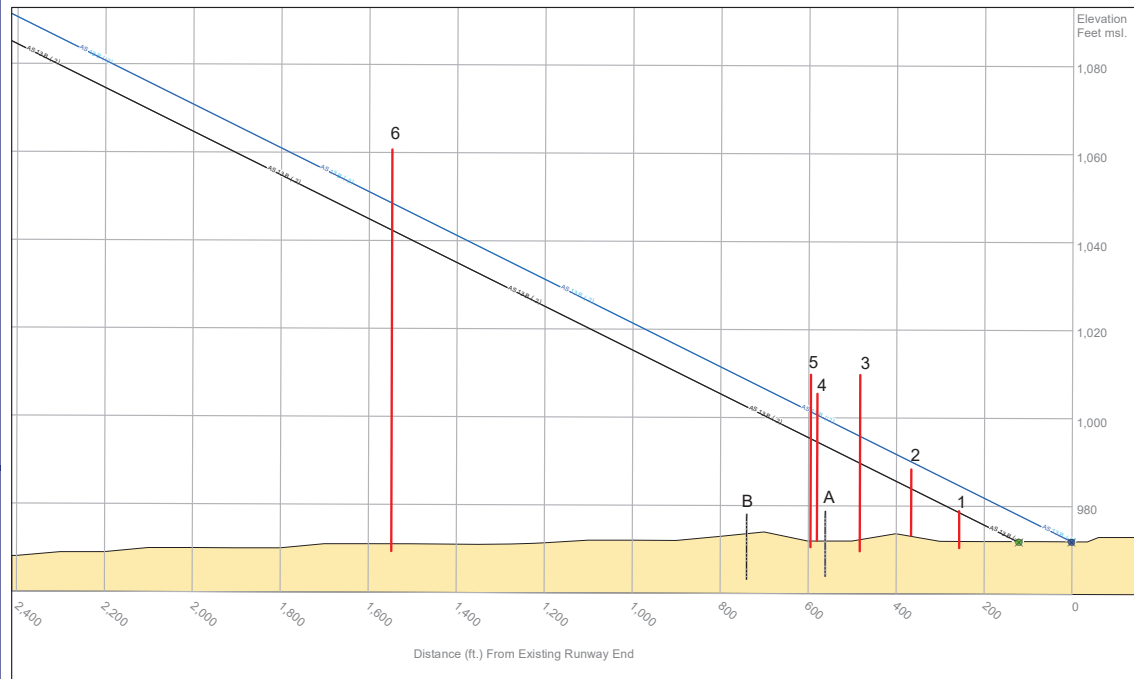
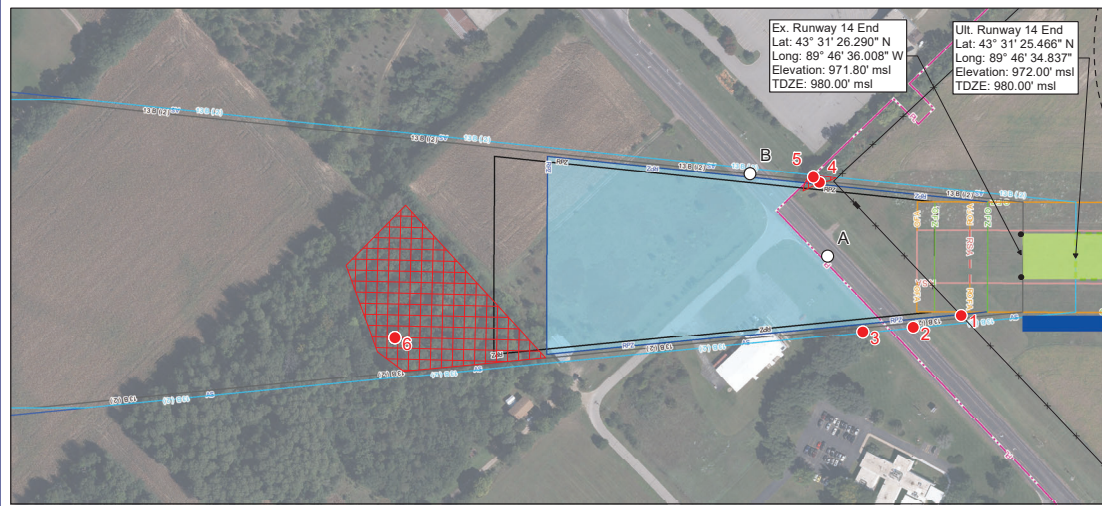
March 2024 SHEET 7 OF 12

**Coffman Associates**  
 Airport Consultants

THE PREPARATION OF THESE DOCUMENTS WAS FINANCED IN PART THROUGH A PLANNING GRANT FROM THE FEDERAL AVIATION ADMINISTRATION AS PROVIDED UNDER SECTION 566 OF THE AIRPORT AND AIRWAY IMPROVEMENT ACT OF 1982 AS AMENDED. THE CONTENTS DO NOT NECESSARILY REFLECT THE OFFICIAL VIEW OR POLICY OF THE FAA. ACCEPTANCE OF THESE DOCUMENTS BY THE FAA DOES NOT IN ANY WAY CONSTITUTE A COMMITMENT OF THE PART OF THE UNITED STATES TO PARTICIPATE IN ANY DEVELOPMENT DEPICTED HEREIN NOR DOES IT INDICATE THAT THE PROPOSED DEVELOPMENT IS ENVIRONMENTALLY ACCEPTABLE IN ACCORDANCE WITH THE APPROPRIATE PUBLIC LAWS



PDF Created: Date: 2/23/2024, Time: 10:41:49 AM, Source Document Path: C:\Users\corm\Documents\Baraboo\_2022\ALP\_Series\GIS\DL\Baraboo\_2022\ALP\_Series\GIS\DL\Baraboo\_2022\ALP\_Series\InnerApproach.mxd



Runway 14 Inner-Approach Obstructions									
ID	Feature	Ground Elevation (ft. msl.)	AGL (ft.)	Top Elevation (ft. msl.)	Penetration Value				Remediation
					Existing Part 77 Approach	Ultimate Part 77 Approach	Existing 13B #2	Ultimate 13B #2	
1	Fence	970.97	8.40	979.37	0.72	N/A	0.72	N/A	Runway Shifted In Ultimate Condition
2	US 12	973.43	15.00	988.43	2.81	N/A	2.81	N/A	Runway Shifted In Ultimate Condition
3	Tree	970.92	40.15	1,011.07	N/A	15.02	N/A	15.02	Trim/Remove
4	Tree	971.29	33.38	1,004.67	9.86	N/A	9.86	N/A	Trim/Remove
5	Tree	972.21	39.19	1,011.40	N/A	9.70	N/A	9.70	Trim/Remove
6	Tree	970.08	91.26	1,061.34	18.33	12.13	18.33	12.13	Trim/Remove

ID	Feature	Ground Elevation (ft. msl.)	AGL (ft.)	Top Elevation (ft. msl.)	Penetration Value		Remediation
					Ultimate Part 77 Approach	Ultimate 13B #2	
1	Tree	981.19	51.33	1,032.52	1.11	1.11	Trim/Remove

Runway 14 Inner-Approach Road Points						
ID	Feature	Ground Elevation (ft. msl.)	Adjustment (ft.)	Top Elevation (ft. msl.)	Existing Approach Surface Clearance (ft.)	Ultimate Approach Surface Clearance (ft.)
A	Fox Hill	981.81	15.00	996.81	64.01	52.01
B	Fox Hill	982.79	15.00	997.79	76.80	64.80

Runway 14 Inner-Approach Road Points						
ID	Feature	Ground Elevation (ft. msl.)	Adjustment (ft.)	Top Elevation (ft. msl.)	Existing Approach Surface Clearance (ft.)	Ultimate Approach Surface Clearance (ft.)
2	US 12	973.42	15	988.42	2.81' Obstruction	9.19
A	US 12	972.41	15	987.41	6.45	18.45
B	US 12	971.78	15	986.78	15.92	27.92

**General Notes**  
 1. Survey by Martinez Geospatial (09/08/2022).  
 2. Obstruction Points analyzed from MTZ Survey and faa.adip.gov  
 3. Obstructions within groupings represent tallest man made and/or natural and/or terrain feature.  
 4. Approach terrain profile represents the highest elevation across the width of the approach surfaces.

**DRAFT**

Baraboo/Wisconsin Dells Regional Airport  
**Runway 14/32 Inner-Approach Profile Drawing**  
 Baraboo, Wisconsin

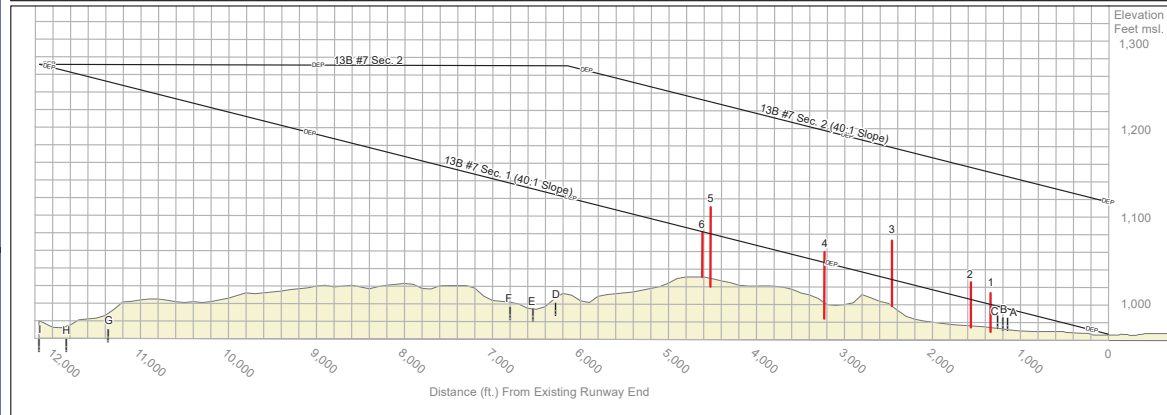
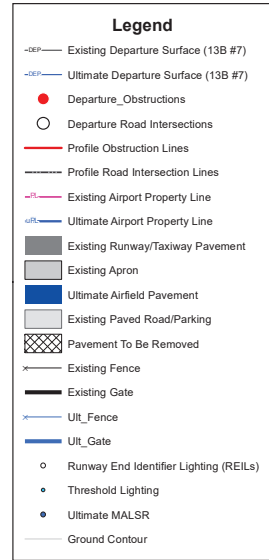
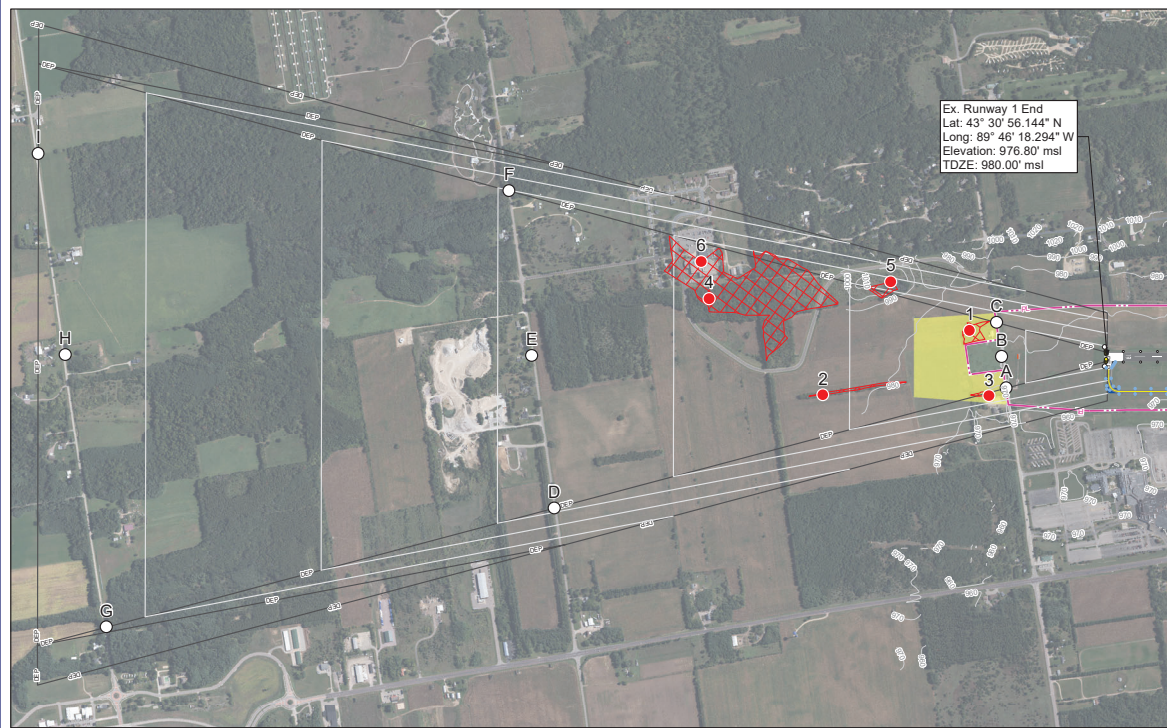
PLANNED BY: Tyler Stuber  
 DETAILED BY: Chris Donnelly  
 APPROVED BY: Mike Dmyterko

March 2024    SHEET 8 OF 12

THE PREPARATION OF THESE DOCUMENTS WAS FINANCED IN PART THROUGH A PLANNING GRANT FROM THE FEDERAL AVIATION ADMINISTRATION AS PROVIDED UNDER SECTION 566 OF THE AIRPORT AND AIRWAY IMPROVEMENT ACT OF 1982 AS AMENDED. THE CONTENTS DO NOT NECESSARILY REFLECT THE OFFICIAL VIEWS OR POLICY OF THE FAA. ACCEPTANCE OF THESE DOCUMENTS BY THE FAA DOES NOT IN ANY WAY CONSTITUTE A COMMITMENT OF THE PART OF THE UNITED STATES TO PARTICIPATE IN ANY DEVELOPMENT DESCRIBED HEREIN NOR DOES IT INDICATE THAT THE PROPOSED DEVELOPMENT ENVIRONMENTALLY ACCEPTABLE IN ACCORDANCE WITH THE APPROPRIATE PUBLIC LAWS



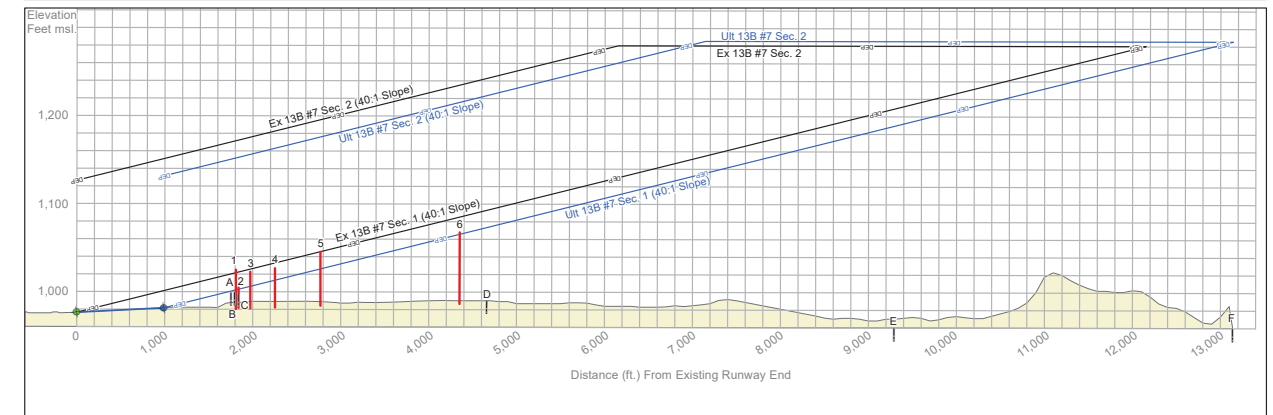
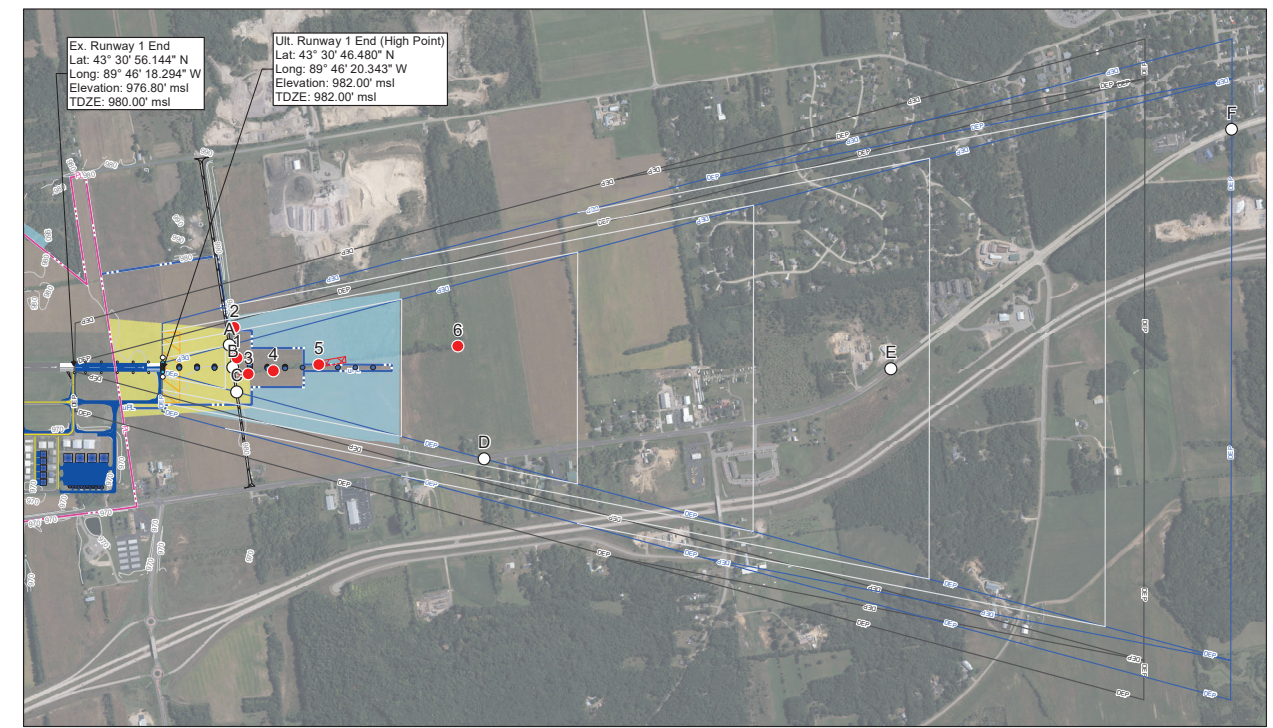
PDF Created: Date: 2/23/2024, Time: 10:42:33 AM, Source Document Path: C:\Users\corm\Documents\Coffman Associates Inc\Coffman - sp\_GIS\DLL\_Baraboo\_2022\ALP\_Series\RMX\Da09\_DLL\_Departure\_0119.mxd



Runway 19 End Departure Obstructions						
ID	Feature	Ground Elevation (ft. msl.)	AGL (ft.)	Top Elevation (ft. msl.)	Penetration Value (ft.)	Remediation
1	Tree	974.26	51.36	1,025.62	19.34	Remove Tree
2	Tree	983.50	75.65	1,059.15	11.21	Remove Tree
3	Tree	971.28	43.88	1,015.16	1.50	Remove Tree
4	Tree	1,022.94	90.42	1,113.36	33.02	Remove Tree
5	Tree	1,008.75	65.74	1,074.49	0.60	Remove Tree
6	Building	1,040.30	43.63	1,083.93	1.33	Add Obstruction Light

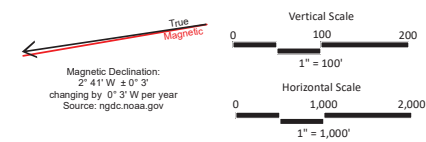
Runway 19 End Road Points					
ID	Feature	Ground Elevation (ft. msl.)	Adjustment (ft.)	Top Elevation (ft. msl.)	Departure Surface Clearance (ft.)
A	Reedsburg	969.11	15.00	984.10	11.75
B	Reedsburg	970.96	15.00	985.96	11.24
C	Reedsburg	974.88	15.00	989.88	8.79
D	Shady Lane	987.36	15.00	1,002.36	121.88
E	Shady Lane	992.31	15.00	1,007.31	123.43
F	Shady Lane	980.03	15.00	995.03	142.20
G	Moon	956.56	15.00	971.56	279.82
H	Moon	939.52	15.00	954.52	308.72
I	Moon	937.01	15.00	952.01	318.99

**General Notes**  
 1. Survey by Martinez Geospatial (09/08/2022).  
 2. Obstruction Points analyzed from MTZ Survey and faa.adip.gov.  
 3. Obstructions within groupings represent tallest man made and/or natural and/or terrain feature.  
 4. Departure terrain profile represents the highest elevation across the width of Section 1 of the Departure Surface.  
 5. Only ultimate condition elevation lines shown for runway 1 end.



Runway 1 End Departure Obstructions							
ID	Feature	Ground Elevation (ft. msl.)	AGL (ft.)	Top Elevation (ft. msl.)	Penetration Value (ft.)		Remediation
					Existing Departure Surface	Ultimate Departure Surface	
1	Tree	983.08	23.23	1,006.31	N/A	3.04	Remove Tree
2	Tree	979.18	44.79	1,023.97	1.88	N/A	Remove Tree
3	Tree	981.11	41.58	1,022.69	N/A	16.17	Remove Tree
4	Tree	980.13	44.59	1,024.72	N/A	11.12	Remove Tree
5	Tree	982.79	61.40	1,044.19	N/A	17.68	Remove Tree
6	Tree	985.92	81.15	1,067.07	N/A	1.03	Remove Tree

Runway 1 End Road Points						
ID	Feature	Ground Elevation (ft. msl.)	Adjustment (ft.)	Top Elevation (ft. msl.)	Existing Departure Surface Clearance (ft.)	Ultimate Departure Surface Clearance (ft.)
A	Pit	985.92	15.00	1,000.91	30.13	N/A - To Be Closed
B	Pit	984.19	15.00	999.19	32.86	N/A - To Be Closed
C	Pit	982.46	15.00	997.46	35.70	N/A - To Be Closed
D	US 12	977.73	15.00	992.73	110.87	80.92
E	US 12	940.23	15.00	955.23	263.80	233.85
F	US 12	926.63	15.00	941.63	374.12	344.17



Baraboo/Wisconsin Dells Regional Airport

## Runway 1/19 Departure Surface Drawing

Baraboo, Wisconsin **DRAFT**

No.	REVISIONS	DATE	BY	APP'D

PLANNED BY: Tyler Stuber

DETAILED BY: Chris Donnelly

APPROVED BY: Mike Dmyterko

March 2024

SHEET **9** OF **12**

THE PREPARATION OF THESE DOCUMENTS WAS FINANCED IN PART THROUGH A PLANNING GRANT FROM THE FEDERAL AVIATION ADMINISTRATION AS PROVIDED UNDER SECTION 566 OF THE AIRPORT AND AIRWAY IMPROVEMENT ACT OF 1982, AS AMENDED. THE CONTENTS DO NOT NECESSARILY REFLECT THE OFFICIAL POLICY OR POSITION OF THE FAA. ACCEPTANCE OF THESE DOCUMENTS BY THE FAA DOES NOT IN ANY WAY CONSTITUTE A COMMITMENT OF THE PART OF THE UNITED STATES TO PARTICIPATE IN ANY DEVELOPMENT DESCRIBED HEREIN NOR DOES IT INDICATE THAT THE PROPOSED DEVELOPMENT ENVIRONMENTALLY ACCEPTABLE IN ACCORDANCE WITH THE APPROPRIATE PUBLIC LAWS



PDF Created: Date: 2/23/2024, Time: 10:43:56 AM, Source Document Path: C:\Users\corm\Documents\Coffman Associates Inc\Coffman - sp GIS\DLL Baraboo\_2022\ALP\_Series\ESR\IMX\Da10\_DLL\_TAD.mxd



Existing Structures		
ID	Feature	Top Elevation (ft. msl.)
1	Airport Beacon	1,029.14
2	Equipment Shed	984.10
3	Terminal Building (To Be Relocated)	999.30
4	Executive Hangar	999.28
5	Executive Hangar	1,000.36
6	Executive Hangar	1,001.28
7	Executive Hangar	997.55
8	Executive Hangar	999.72

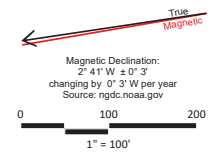
Ultimate Structures		
ID	Feature	Top Elevation (ft. msl.)*
9	T-Hangars	993.91
10-32	Box Hangar	Varies
33	TC's Air Care	1,003.04
34 - 47	Box Hangar	Varies
48	Executive Hangar	1,003.59
49	Executive Hangar	1,007.35
50	Executive Hangar	1,009.92

Ultimate Structures		
ID	Feature	Top Elevation (ft. msl.)*
100	Relocated Beacon	1,029.14
101	70' x 70' Hangars	1,000.00
102	70' x 70' Hangars	1,000.00
103	70' x 70' Hangars	1,000.00
104	80' x 80' Hangar	1,005.00
105	80' x 80' Hangar	1,005.00
106	80' x 80' Hangar	1,005.00
107	80' x 80' Hangar	1,005.00
108	Conventional Hangar 200' x 150'	1,010.00
109	New Terminal Building	990.00
110	Conventional Hangar (100' x 100')	1,005.00
111	Executive Hangar 70' x 70'	1,000.00
112	Executive Hangar 70' x 70'	1,000.00
113	Executive Hangar 70' x 70'	1,000.00
114	Executive Hangar 70' x 70'	1,000.00
115	Executive Hangar 70' x 70'	1,000.00
116	Executive Hangar 100' x 100'	1,005.00
117	Executive Hangar 100' x 100'	1,005.00
118	Executive Hangar 100' x 100'	1,005.00
119	Executive Hangar 100' x 100'	1,005.00
120	Nested T-Hangars (12)	990.00

\*Top Elevation Estimated

**Legend**

- Existing Airport Property Line
- Existing Easement
- Existing Critical Area
- Existing Airport Beacon
- Ultimate Airport Beacon
- Existing Runway/Taxiway Pavement
- Existing Apron
- Ultimate Airfield Pavement
- Existing Turf Runway
- Existing Turf Runway Marker
- Ultimate Turf Runway
- Ultimate Turf Runway Marking
- Unpaved Road/Parking
- Existing Paved Road/Parking
- Ultimate Paved Road/Parking
- Off Airport Structure
- Existing On Airport Structure
- Ultimate Structure
- Existing Fence
- Existing Gate
- Ult\_Fence
- Ult\_Gate
- Taxiway Lighting
- Existing Wind Indicator
- Ultimate Wind Indicator
- Existing Runway Visibility Zone (RVZ)
- Ultimate Runway Visibility Zone (RVZ)
- Existing Runway Safety Area (RSA)
- Ultimate Runway Safety Area (RSA)
- Existing Runway Object Free Area (ROFA)
- Ultimate Runway Object Free Area (ROFA)
- Existing Runway Obstacle Free Zone (ROFZ)
- Ultimate Runway Obstacle Free Zone (ROFZ)
- Taxiway/Taxilane Object Free Area (TOFA)
- Taxiway/Taxilane Safety Area (TSA)
- Ultimate 35' BRL
- Ground Contour



**General Notes**  
1. Survey by Martinez Geospatial (09/08/2022).

No.	REVISIONS	DATE	BY	APPD

**Baraboo/Wisconsin Dells Regional Airport**

**Terminal Area Drawing**

Baraboo, Wisconsin **DRAFT**

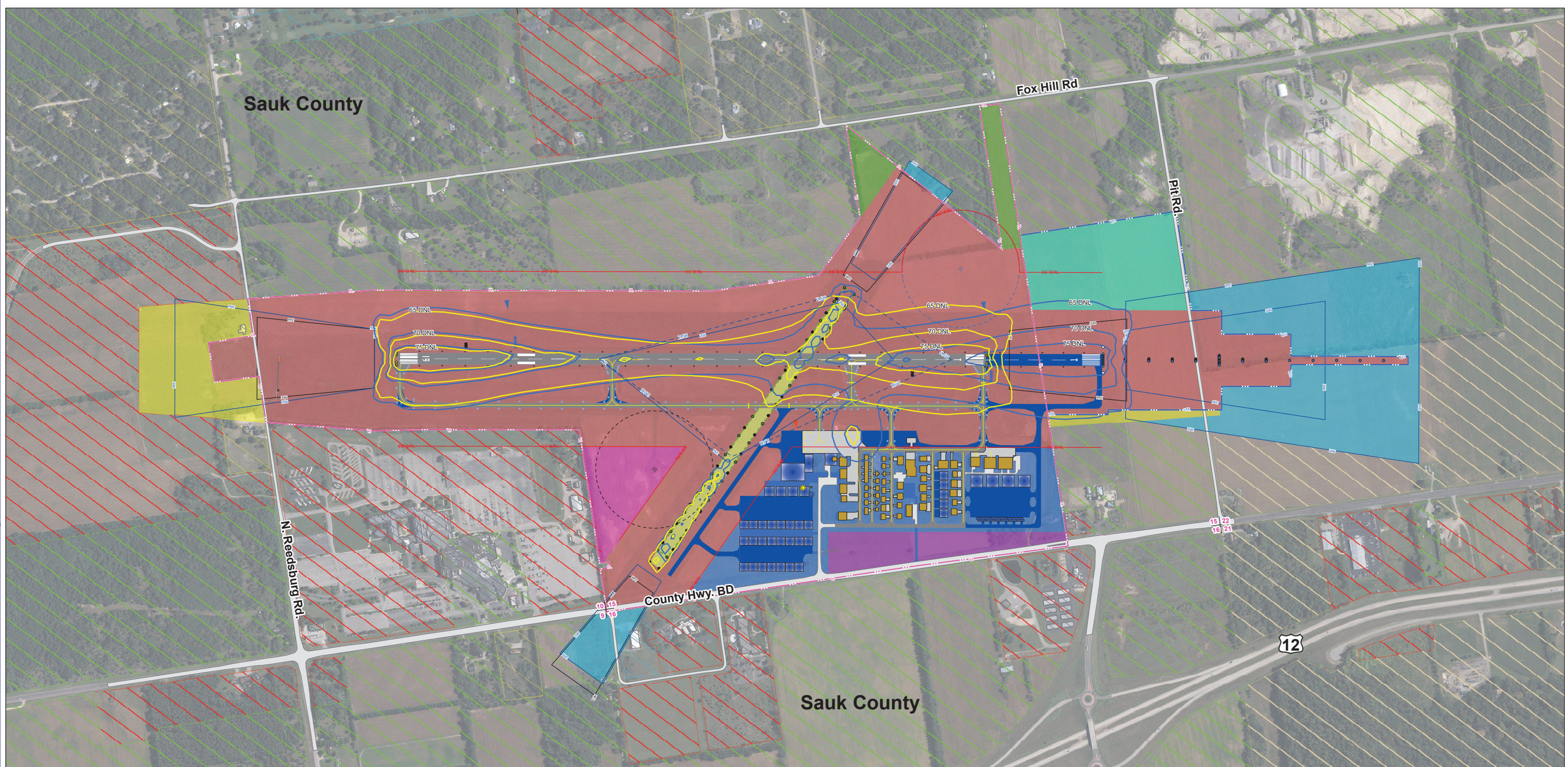
PLANNED BY: Tyler Stuber  
 DETAILED BY: Chris Donnelly  
 APPROVED BY: Mike Dmyterko

March 2024 SHEET 10 OF 12

THE PREPARATION OF THESE DOCUMENTS WAS FINANCED IN PART THROUGH A PLANNING GRANT FROM THE FEDERAL AVIATION ADMINISTRATION AS PROVIDED UNDER SECTION 566 OF THE AIRPORT AND AIRWAY IMPROVEMENT ACT OF 1982, AS AMENDED. THE CONTENTS DO NOT NECESSARILY REFLECT THE OFFICIAL POLICY OR POSITION OF THE FAA. ACCEPTANCE OF THESE DOCUMENTS BY THE FAA DOES NOT IN ANY WAY CONSTITUTE A COMMITMENT OF THE PART OF THE UNITED STATES TO PARTICIPATE IN ANY DEVELOPMENT DEPICTED HEREIN NOR DOES IT INDICATE THAT THE PROPOSED DEVELOPMENT IS ENVIRONMENTALLY ACCEPTABLE IN ACCORDANCE WITH THE APPROPRIATE PUBLIC LAWS.



PDF Created: Date: 2/23/2024, Time: 10:44:31 AM, Source Document Path: C:\Users\cdm\Coffman Associates\Incoffman - sp GIS\DLL Baraboo\_2022\ALP\_Settlement\MapDocs\11\_DLL\_LandUse.mxd



**Legend**

Existing Noise Contour	Ultimate Road/Parking
Ultimate Noise Contour	Existing Airport Beacon
Ex_Airport_Property	Ultimate Airport Beacon
Ultimate Airport Property	Localizer
Existing On Airport Structure	Existing Wind Indicator
Off Airport Structure	Ultimate Wind Indicator
Ultimate Structure	Existing AWOS
Existing Apron	Ultimate AWOS
Ultimate Apron	Existing Critical Area
Existing Taxiway	Ultimate Critical Area
Ultimate Taxiway	Existing Runway Protection Zone (RPZ)
Existing Runway	Ultimate Runway Protection Zone (RPZ)
Ultimate Runway	Existing Runway Visibility Zone
Existing Turf Runway	Ultimate Runway Visibility Zone
Ultimate Turf Runway	Ultimate 35' Building Restriction Line
Existing Road/Parking	Section Corners

**Land Use Legend**

<b>On-Airport Land Use</b>	<b>Off-Airport Land Use</b>
Airfield Operations	Residential
Existing Easement	Commercial
General Aviation	Agriculture
General Aviation Reserve	Recreational
Open Space	Conservancy
Revenue Support - Non-Aeronautical	
Ultimate Commercial Service Reserve	
Ultimate Easement	

**General Notes**

- Survey by Martinez Geospatial (09/08/2022).
- Zoning information from Sauk County.
- Noise Contours - AEDT Version 3E, Coffman Associates, Inc. analysis.
- No county or municipal boundaries visible at this scale.
- Airport vicinity zoning limitations are established per the Village of Lake Delton, WI Code of Ordinances, Chapter 63 (Ord. 11-98-326, Passed November 23, 1998). The height of buildings and trees may not exceed the elevations indicated on the height limitation zoning map referenced in Section 63.01.

No.	REVISIONS	DATE	BY	APPD

**Baraboo/Wisconsin Dells Regional Airport**

**Airport Land Use Drawing**

**Baraboo, Wisconsin**

**DRAFT**

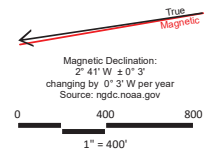
PLANNED BY: Tyler Stuber

DETAILED BY: Chris Donnelly

APPROVED BY: Mike Dmyterko

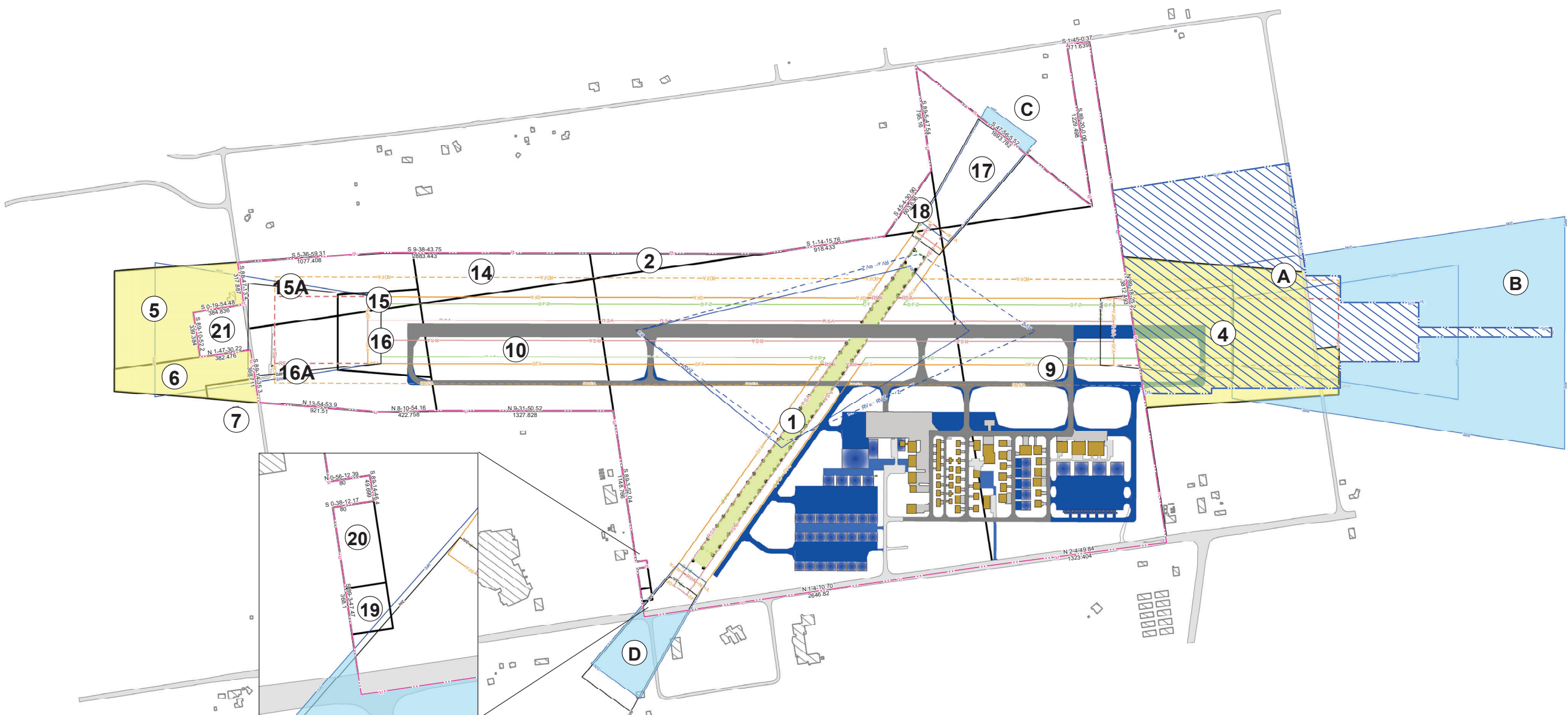
March 2024

SHEET **11** OF **12**





PDF Created: Date: 2/23/2024, Time: 10:46:47 AM, Source Document Path: C:\Users\cdm\OneDrive\Documents\Coffman Associates Inc\Coffman - sp GIS\DL Baraboo\_2022\ALP\_Settles\ESR\Map\DL ExhibitA.mxd



**Legend**

- Existing Airport Property Line
- Ultimate Airport Property Line
- Existing Property Parcel
- Ultimate Property Parcel
- Existing Easement
- Ultimate Easement
- Existing Runway Protection Zone (RPZ)
- Ultimate Runway Protection Zone (RPZ)
- Existing Runway Visibility Zone (RVZ)
- Ultimate Runway Visibility Zone (RVZ)
- Existing Runway Safety Area (RSA)
- Ultimate Runway Safety Area (RSA)
- Existing Runway Object Free Area (ROFA)
- Ultimate Runway Object Free Area (ROFA)
- Existing Runway Obstacle Free Zone (ROFZ)
- Ultimate Runway Obstacle Free Zone (ROFZ)
- Existing Runway/Taxiway Pavement
- Existing Apron
- Ultimate Airfield Pavement
- Existing Turf Runway
- Ultimate Turf Runway
- Existing Turf Runway Marker
- Ultimate Turf Runway Marking
- Unpaved Road/Parking
- Existing Paved Road/Parking
- Ultimate Paved Road/Parking
- Off Airport Structure
- Existing On Airport Structure
- Ultimate Structure

Existing Property Table												
Tract/Parcel ID	Grantor	Grantee	Interest Type	Acres	Instrument	Book/Page	FAA Grant #	Easement	Date	Current Parcel ID	Purpose of Acquisition	APN
1	Lloyd and Evelyn Bell	City of Baraboo	Fee Simple	154.84				no		234	Airport Development	008-0234-00000
2	Lawrence and Lucille Kory	City of Baraboo	Fee Simple	2.87				no		231	Airport Development	008-0231-00000
4	Warren and Mertha Trager	City of Baraboo	Easement	32.82				yes		242	Airport Development	008-0242-00000/008-0241-00000/002-0687-00000
5	Frank and Elizabeth La Bak	City of Baraboo	Easement	12.73			FAAP-01	yes		21	Airport Development	008-0021-00000/008-0198-20000
6	Kenneth and Dorothy Holt	City of Baraboo	Easement	5.5			FAAP-01	yes		21	Airport Development	008-0021-00000
7	City of Baraboo-Joint School District 1	City of Baraboo	Easement	1.18			FAAP-01	yes		204	Airport Development	008-0204-00000
9	Clarence and Leona Rich	City of Baraboo	Fee Simple	82.94				no		240,239,246	Airport Development	008-0246-00000/008-0239-00000/008-0240-00000
10	George Powell	City of Baraboo	Fee Simple	27.92				no		212	Airport Development	008-0212-00000
14	Robert and Lavona Cook	City of Baraboo	Fee Simple	8.76				no		224	Airport Development	008-0224-00000
15	Clifford and Angeline Genge	City of Baraboo	Fee Simple	1.88				no		219	Airport Development	008-0219-00000
15a	Clifford and Angeline Genge	City of Baraboo	Fee Simple	11.73				no		219	Airport Development	008-0219-00000
16	Edward and Marie Grosshans	City of Baraboo	Fee Simple	7.32				no		206	Airport Development	008-0206-00000
16a	Edward and Marie Grosshans	City of Baraboo	Fee Simple	14.06				no		206	Airport Development	008-0206-00000
17	Leona Sheehan	City of Baraboo	Fee Simple	16.25				no		245-01	Airport Development	008-0245-01000
18	Lawrence and Lucille Kory	City of Baraboo	Fee Simple	2.11				no		245-1	Airport Development	008-0245-10000
19	Kenneth Decker	City of Baraboo	Fee Simple	0.15				no		236	Airport Development	008-0236-00000
20	James Brown	City of Baraboo	Fee Simple	0.29				no		235	Airport Development	008-0235-00000/008-0237-00000
21	Mark and Patty Coolidge	City of Baraboo	Fee Simple	3.02			SA-56	no		198,198-1	Airport Development	008-0198-10000/008-0198-00000

Ultimate Property Table		
ID	Type	Acres
A	Airport Property	58.95
B	Avigation Easement	52.53
C	Avigation Easement	1.13
D	Avigation Easement	5.58

No.	REVISIONS	DATE	BY	APPD

**Baraboo/Wisconsin Dells Regional Airport**  
**Exhibit "A" Property Inventory Map**  
 Baraboo, Wisconsin **DRAFT**

PLANNED BY: Tyler Stuber  
 DETAILED BY: Chris Donnelly  
 APPROVED BY: Mike Dmyterko

March 2024 SHEET 12 OF 12

THE PREPARATION OF THESE DOCUMENTS WAS FINANCED IN PART THROUGH A PLANNING GRANT FROM THE FEDERAL AVIATION ADMINISTRATION AS PROVIDED UNDER SECTION 566 OF THE AIRPORT AND AIRWAY IMPROVEMENT ACT OF 1982, AS AMENDED. THE CONTENTS DO NOT NECESSARILY REFLECT THE OFFICIAL VIEWS OR POLICY OF THE FAA. ACCEPTANCE OF THESE DOCUMENTS BY THE FAA DOES NOT IN ANY WAY CONSTITUTE A COMMITMENT OF THE PART OF THE UNITED STATES TO PARTICIPATE IN ANY DEVELOPMENT DEPICTED HEREIN NOR DOES IT INDICATE THAT THE PROPOSED DEVELOPMENT ENVIRONMENTALLY ACCEPTABLE IN ACCORDANCE WITH THE APPROPRIATE PUBLIC LAWS